

Pre-Renovation Hazardous Materials Survey

**Terra Linda High School Campus
320 Nova Albion Way
San Rafael, California**

February 21, 2020

Terracon Project No. R1207238



Prepared for:

San Rafael City Schools
San Rafael, California

Prepared by:

Terracon Consultants, Inc.
Emeryville, California

Terracon Consultants, Inc. 1466 66th Street Emeryville, California 94608
P [510] 547 7771 F [510] 547 1983 terracon.com



Environmental



Facilities



Geotechnical



Materials

February 21, 2020

Daniel Zaich
San Rafael City Schools
310 Nova Albion Way
San Rafael, CA 94903

Attn: Daniel Zaich
E: dzaich@srcs.org


RE: Pre-Renovation Hazardous Materials Survey
Terra Linda High School
320 Nova Albion Way
San Rafael, CA
Terracon Project No: R1207238

Dear Mr. Zaich:

Terracon Consultants, Inc. (Terracon) hereby submits the attached report for the referenced site to San Rafael City Schools. The purpose of this report is to present the data gathered during the pre-renovation hazardous materials survey that was performed on February 17, 2020. This survey was conducted in general accordance with Terracon's proposal PR1207238, dated February 17, 2020. We understand that this survey was requested due to the planned renovation of multiple structures, including the main classroom building, the gymnasium, and the exterior kiln shed located throughout the affected campus.

Terracon appreciates the opportunity to provide this service to San Rafael City Schools. If you have any questions regarding this report, please contact our office at your convenience.

Sincerely,
Terracon Consultants, Inc.


William Frieszell, CAC, CIH
Senior Industrial Hygienist



Karin Schroeter, CAC, CDPH Lead I/A
Department Manager

TABLE OF CONTENTS

1.0	INTRODUCTION	1
1.1	Project Scope	2
1.2	Reliance	2
2.0	METHODS AND SAMPLING STRATEGY	2
2.1	Asbestos, Lead, PCBs, and Other Hazardous Building Materials.....	2
2.2	Visual Assessment - Asbestos	3
2.3	Physical Assessment - Asbestos	3
2.4	Sample Analysis - Asbestos	3
2.5	Lead Containing Paint and Materials.....	4
2.6	Visual Assessment - Lead Containing Paint and Materials	4
2.7	Physical Assessment - Lead Containing Paint and Materials	4
2.8	Paint and Bulk Material Analysis - Lead	4
2.9	Exterior Sealants - PCBs.....	5
3.0	SURVEY FINDINGS	5
3.1	Asbestos	5
3.2	Lead Containing Paint and Bulk Materials	11
3.3	PCB Sealants	12
4.0	CONCLUSIONS	13
5.0	REGULATORY OVERVIEW	14
5.1	Asbestos.....	14
5.2	Lead Containing Paint/Materials.....	14
6.0	LIMITATIONS / GENERAL COMMENTS.....	15

APPENDIX A ASBESTOS ANALYTICAL LABORATORY DATA

APPENDIX B LEAD ANALYTICAL LABORATORY DATA

APPENDIX C PCB ANALYTICAL LABORATORY DATA

APPENDIX D SAMPLE LOCATION DIAGRAMS

APPENDIX E CERTIFICATIONS

PRE-RENOVATION HAZARDOUS MATERIALS SURVEY

Terra Linda High School

320 Nova Albion Way

San Rafael, California

Terracon Project No. R1207238

February 21, 2020

1.0 INTRODUCTION

Terracon Consultants, Inc. (Terracon) conducted a pre-renovation hazardous materials survey in limited areas of three (3) structures associated with Terra Linda High School Campus located at 320 Nova Albion Way in San Rafael, California. The survey was conducted on February 17, 2020 in general accordance with Terracon's proposal PR1207238 which was also issued on February 17, 2020, as well as the asbestos sampling protocols established in Environmental Protection Agency (EPA) regulation 40 Code of Federal Regulations (CFR) Part 763 Subpart E 763.86, (Asbestos Hazard Emergency Response Act, AHERA).

It should be noted that the purpose of this survey was to identify materials within the affected areas that may be impacted by pending planned renovation projects scheduled to occur at the property. Based on information provided by the client, the scope of planned renovations includes the replacement of windows and exterior storefronts as well as limited restroom and classroom renovations at the main classroom building, limited modifications to the gymnasium, and the removal of an exterior kiln shed.

A total of thirty-three (33) suspect asbestos containing materials (ACMs) were identified and sampled throughout the aforementioned structures from within the path of construction as understood by Terracon. Of the materials sampled, six (6) were reported positive for asbestos content in concentrations exceeding the laboratory limit of detection. An additional two (2) materials could not be sampled at the time of the survey due to constraints posed by current building occupancy.

Five (5) painted surfaces, three (3) glazing compounds and three (3) bulk materials were sampled for potential lead content during the survey. Five (5) painted surfaces, one (1) glazing compound and two (2) bulk materials were found to contain lead in concentrations in exceedance of the laboratory detection limit.

Ten (10) samples from six (6) different types exterior sealant compounds were collected in order to analyze for potential polychlorinated biphenyl (PCB) content. PCBs were not detected above the analytical reporting limit in any of the materials sampled.

Pre-Renovation Hazardous Materials Survey

Terra Linda High School ■ San Rafael, California
February 21, 2020 ■ Terracon Project No. R1207238



1.1 Project Scope

The scope of the survey was as follows:

- Inspect limited areas of the three (3) listed buildings of the Terra Linda High School campus site for the presence of suspect ACMs, lead-containing paint, and PCB-containing sealants.
- Collect samples of suspect ACMs following a National Emissions Standards for Hazardous Air Pollutants (NESHAPS) protocol for sample collection for a demolition survey.
- Asbestos bulk samples were analyzed using polarized light microscopy (PLM) in accordance with the EPA's July 1993 method for the determination of asbestos in bulk building materials - EPA 600/R-93/116.
- Collect bulk paint chip samples of primary painted surfaces and other materials suspected to be lead containing. Bulk samples were analyzed at an accredited laboratory by Flame Atomic Absorption (AA) for Total Lead reported in parts per million (ppm).
- Collect bulk samples of predominant sealants and caulks that may either contain or be contaminated with PCBs for analysis by EPA Method SW8082, Polychlorinated Biphenyls by Gas Chromatography.
- Submit a written report including analytical results, regulatory requirements and conclusions.

1.2 Reliance

This report is for the exclusive use of San Rafael City Schools for the renovation project described at the Terra Linda High School campus in San Rafael, California. Reliance by any other party on this report is prohibited without written authorization of Terracon and the client. Reliance on this report by San Rafael City Schools and all authorized parties will be subject to the terms, conditions, and limitations stated in the proposal, this report and the project contract.

2.0 METHODS AND SAMPLING STRATEGY

2.1 Asbestos, Lead, PCBs, and Other Hazardous Building Materials

The survey was conducted by William Frieszell, California Certified Asbestos Consultant (CAC) and California Department of Public Health (CDPH) Lead Inspector/Assessor. During the survey, additional assistance was provided by Wyatt Renner, California Certified Site Surveillance Technician (CSST). Copies of pertinent training certifications are included in Appendix E. The asbestos portion of the survey was conducted in general accordance with the sample collection protocols established in EPA 40 CFR Part 763 Subpart E 763.86, AHERA. A summary of survey activities is provided below. EPA regulation 40 CFR 61, Subpart M, the National Emission Standards for Hazardous Air Pollutants (NESHAP) prohibits the release of asbestos fibers to the atmosphere during renovation or demolition activities. The asbestos NESHAP requires that regulated ACM be identified, classified, and quantified prior to planned disturbances, renovations, or demolition activities.

2.2 Visual Assessment - Asbestos

Survey activities were initiated with visual observation of the subject structures to identify homogeneous areas of suspect ACM. A homogeneous area (HA) consists of a building material that appears similar throughout in terms of color, size and texture with consideration given to the date of application. Assessment was conducted in all accessible areas of the buildings that were located within the planned path of construction as described by the client.

2.3 Physical Assessment - Asbestos

A physical assessment of each HA of suspect ACM was conducted to assess the current friability and condition of the materials. A friable material is defined by the EPA as a material which can be crumbled, pulverized or reduced to powder by hand pressure when dry. Friability was assessed by physically touching suspect materials.

Based on results of the visual observation, bulk samples of suspect ACM were collected in general accordance with EPA AHERA sampling protocols. Samples of suspect materials were collected from representative locations in each homogeneous area. Bulk samples were collected using wet methods as applicable to reduce the potential for fiber release. Samples were placed in sealable containers and labeled with unique sample numbers using an indelible marker.

The selection of sample locations and frequency of sampling were based on Terracon's observations and the assumption that like materials in the same area are homogeneous in makeup.

Terracon collected a total of eighty (80) bulk samples from thirty-five (35) homogeneous areas of suspect ACM. A summary of the materials reported to contain asbestos is provided in Table I below.

2.4 Sample Analysis - Asbestos

Asbestos bulk samples were submitted under chain of custody to EMLab P&K (EMLab) in Phoenix, Arizona for analysis by polarized light microscopy with dispersion staining techniques per EPA methodology 600/R-93/116. The percentage of asbestos, where applicable, was determined by microscopic visual estimation.

EMLab is accredited under the National Voluntary Laboratory Accreditation Program (NVLAP) Accreditation No. 500031-0. The laboratory reports for the asbestos bulks samples are included as Appendix B.

2.5 Lead Containing Paint and Materials

Terracon collected paint chip samples to determine the lead content in parts per million (ppm) of the predominant painted interior and exterior surfaces within areas of construction at the subject structures. In addition, suspect lead containing bulk materials, such as exterior sealants were sampled to determine potential lead content. Suspect lead paint and bulk material samples were collected in sealable containers and labeled with unique sample numbers using an indelible marker.

2.6 Visual Assessment - Lead Containing Paint and Materials

Inspection activities began with visual observations of painted surfaces to identify unique combinations of paint on building materials. A unique combination of paint consists of paint that is applied to a building material and has similar color, substrate and component. Assessment was conducted throughout the visually accessible areas of the subject buildings. Suspect lead containing bulk materials were also identified visually in similar fashion.

2.7 Physical Assessment - Lead Containing Paint and Materials

A physical assessment of the predominant combination of paints that would be expected to be impacted by pending construction activities was conducted in order to assess the condition of the paint. Typically, known lead containing paints that are in visually poor condition require stabilization activities prior to final building demolition. Lead paint chip samples were collected to comply with Cal-OSHA regulations (Title 8 CCR 1532.1 - Lead Exposure in Construction) for the proposed demolition activities. Paint and bulk materials were sampled to identify potential worker exposure and disposal restrictions.

Terracon collected eleven (11) bulk samples of suspect lead-containing paint (LCP) and other suspect building materials. A summary of suspect LCP and other materials found to contain lead is included in Table III.

2.8 Paint and Bulk Material Analysis - Lead

Paint chip and bulk material samples were submitted under chain of custody to EMLab P&K (EMLab) in Irvine, California. Paint chip and material samples were analyzed by Flame Atomic Absorption method SW846-7000B. EMLab is accredited by the American Industry Hygiene Association's (AIHA) Environmental Lead Laboratory Accreditation Program (ELLAP) to perform Flame Atomic Absorption analysis. The laboratory reports for the lead paint chip and material samples are included as Appendix B.

Pre-Renovation Hazardous Materials Survey

Terra Linda High School ■ San Rafael, California
February 21, 2020 ■ Terracon Project No. R1207238



2.9 Exterior Sealants - PCBs

Bulk sealant samples were collected using a razor knife and were placed into individual containers. Each sample was provided a discreet sample number, which was recorded on a chain of custody form. The samples were transported under chain of custody procedures to McCampbell Analytical, Inc. in Pittsburg, California. All samples were analyzed for PCB content in accordance to EPA Method SW8082. The laboratory reports for PCB samples are included as Appendix C.

Terracon collected ten (10) bulk samples of suspect PCB sealants. A summary of the PCB sealant results is included in Table IV.

3.0 SURVEY FINDINGS

3.1 Asbestos

A total of thirty-five (35) suspect asbestos containing materials (ACMs) were identified throughout affected areas of the three (3) included structures during the survey.

- Thirty (30) materials were identified within the Main Classroom Building
- Three (3) materials were identified within the Gymnasium Building
- Two (2) materials were identified within the Exterior Kiln Shed

Thirty-three (33) of the captioned materials were submitted for laboratory analysis using polarized light microscopy techniques. Six (6) of the materials identified during the survey were reported to contain asbestos in concentrations exceeding the laboratory method limit of detection. An additional two (2) materials could not be sampled at the time of the survey and have been assumed to contain asbestos in accordance with current regulatory framework. Confirmed and assumed materials were only noted to be present within the main classroom building.

The confirmed asbestos containing materials are listed in Table I below.

Table I - Asbestos Containing Materials

Material Description	General Material Location(s)	Waste Category	Asbestos Result
Floor Tile System - 12" White with Blue Flecks over Tan Tile with Black Mastic	Material is Limited to the 2 nd Floor Men's Restroom Area of Building C	Cat. II	White Tile: ND Yellow Mastic: ND Tan Tile: 5% Chrysotile Asbestos Black Mastic: 3% Chrysotile Asbestos
Floor Tile System - 12" White with Blue Flecks and Black Mastic	Material is Limited to the 1 st Floor Men's Restroom Area of Building C	Cat. II	Floor Tile: ND Black Mastic: 2% Chrysotile Asbestos

Pre-Renovation Hazardous Materials Survey

Terra Linda High School ■ San Rafael, California
February 21, 2020 ■ Terracon Project No. R1207238



Material Description	General Material Location(s)	Waste Category	Asbestos Result
Storefront Frame to Concrete Sealant - Grey	Material is Present throughout Storefront Assemblies at Classroom Building Exterior	Cat. II	6% Chrysotile Asbestos
Rubberized Window Frame to Concrete Sealant - Black	Material is Present throughout Window Assemblies at the Main Classroom Building	Cat. II	3% Chrysotile Asbestos
Window Frame to Concrete Sealant - White	Material is Present throughout Window Assemblies at the Main Classroom Building	Cat. II	3% Chrysotile Asbestos
Window Frame to Concrete Sealant - Grey	Material is Present throughout Window Assemblies at the Main Classroom Building	Cat. II	2% Chrysotile Asbestos
Wainscot Adhesive on White FRP Paneling	Material is Limited to the 2nd Floor Women's Restroom Area of Building C	Cat. II	ASSUMED
Ceramic Wall Tile System - 4" Tan Painted Tile with Grout and Adhesive	Material is Present throughout Common Corridor Wall Systems within Building C	Cat. II	ASSUMED

ND = None Detected, NA = Not Applicable, RACM = Regulated asbestos containing material (friable), Cat. I = Non-friable (note ACM must be reclassified as a RACM if rendered friable during removal), Cat. II = Category II Non-friable (note ACM must be reclassified as a RACM if rendered friable during removal), sf = square feet, lf = linear feet

It should be reemphasized that although reasonable efforts were made to survey accessible suspect materials, additional suspect but un-sampled materials could be located under existing building materials, inside walls, above ceilings, in isolated areas or in other concealed areas. In addition, Terracon's scope was limited to materials that will be impacted by the pending renovation project scheduled to occur at the site. Therefore, if suspect materials are encountered during abatement and/or demolition activities that do not appear to have been characterized as ACM or non-ACM, these materials must be assumed to be ACM until samples are collected and analyzed to prove otherwise. Any assumed material should be treated as asbestos or sampled to determine asbestos content before disturbing the material.

Twenty-seven (27) suspect materials were sampled throughout the three (3) affected structures, but were not reported to contain asbestos in detectable quantities during the survey. The non-asbestos containing materials and sampling locations are listed in Table II below.

Table II - Non-Asbestos Containing Materials

Sample Number	Material Description	Sample Location
Main Classroom Building		
1A	Interior Wall Systems - Drywall and Joint Compound	Building A, 2nd Floor Interior - Classroom 58 Area at Southern Wall

Pre-Renovation Hazardous Materials Survey

Terra Linda High School ■ San Rafael, California
 February 21, 2020 ■ Terracon Project No. R1207238



Sample Number	Material Description	Sample Location
1B	Interior Wall Systems - Drywall and Joint Compound	Building A, 2nd Floor Interior - Classroom 58 Area at Northeastern Corner
1C	Interior Wall Systems - Drywall and Joint Compound	Building A, 2nd Floor Interior - Classroom 58 Area at Southeastern Corner
2A	Ceiling Tile - 2'x2' White Lay - in System, Rough Textured	Building A, 2nd Floor Interior - Classroom 58 Area at Southern Side
2B	Ceiling Tile - 2'x2' White Lay - in System, Rough Textured	Building A, 2nd Floor Interior - Classroom 58 Area at Northeastern Corner
2C	Ceiling Tile - 2'x2' White Lay - in System, Rough Textured	Building A, 2nd Floor Interior - Classroom 58 Area at Southeastern Corner
3A	Floor Tile System - 12" White with Tan Flecks and Yellow Mastic	Building A, 2nd Floor Interior - Classroom 58 Area at Northeastern Sink
3B	Floor Tile System - 12" White with Tan Flecks and Yellow Mastic	Building A, 2nd Floor Interior - Classroom 58 Area, Southeastern Store Room at Northern Side
3C	Floor Tile System - 12" White with Tan Flecks and Yellow Mastic	Building A, 2nd Floor Interior - Classroom 58 Area at Western Side
4A	Interior Window Frame Sealant - White	Building A, 2nd Floor Interior - Classroom 58 Area at Northwestern Corner
4B	Interior Window Frame Sealant - White	Building A, 2nd Floor Interior - Classroom 58 Area at Northeastern Corner
5A	Cove Base Adhesive - White on 4" Black Cove	Building A, 2nd Floor Interior - Classroom 58 Area at Northeastern Sink
5B	Cove Base Adhesive - White on 4" Black Cove	Building A, 2nd Floor Interior - Classroom 58 Area, Southeastern Store Room at Northern Side
6A	Sink Undercoating - Grey	Building A, 2nd Floor Interior - Classroom 58 Area at Northeastern Sink
6B	Sink Undercoating - Grey	Building A, 2nd Floor Interior - Classroom 58 Area at Northwestern Sink
6C	Sink Undercoating - Grey	Building A, 2nd Floor Interior - Classroom 58 Area at Southwestern Sink
7A	Ceramic Wall Tile System - 4" Tan/White Tiles with Grout and Mastic	Building C, 2nd Floor Interior - Women's Restroom Area at Western Damaged Area

Pre-Renovation Hazardous Materials Survey

Terra Linda High School ■ San Rafael, California
 February 21, 2020 ■ Terracon Project No. R1207238



Sample Number	Material Description	Sample Location
7B	Ceramic Wall Tile System - 4" Tan/White Tiles with Grout and Mastic	Building C, 2nd Floor Interior - Women's Restroom Area at Western Damaged Area
8A	Interior Wall Systems - White Plaster with Beige Coating	Building C, 2nd Floor Interior - Women's Restroom Janitor Closet at Southeastern Corner
8B	Interior Wall Systems - White Plaster with Beige Coating	Building C, 2nd Floor Interior - Men's Restroom Area at Northwestern Corner
8C	Interior Wall Systems - White Plaster with Beige Coating	Building C, 1st Floor Interior - Women's Restroom Janitor Closet at Southern Wall
9A	Cove Base Adhesive - Brown on 4" Blue Cove	Building C, 2nd Floor Interior - Men's Restroom Area at Northwestern Corner
10A	Ceramic Floor Tile System - 2" Grey/White Tiles with Grout and Mortar	Building C, 2nd Floor Interior - Women's Restroom Janitor Closet at Entry Way
10B	Ceramic Floor Tile System - 2" Grey/White Tiles with Grout and Mortar	Building C, 2nd Floor Interior - Women's Restroom Janitor Closet at Entry Way
10C	Ceramic Floor Tile System - 2" Grey/White Tiles with Grout and Mortar	Building C, 1st Floor Interior - Women's Restroom Janitor Closet at Entry Way
14A	Cove Base Adhesive - Brown on 4" Black Cove	Building C, 2nd Floor Interior - Women's Restroom Janitor Closet at Southeastern Corner
14B	Cove Base Adhesive - Brown on 4" Black Cove	Building C, 2nd Floor Interior - Women's Restroom Janitor Closet at Southeastern Corner
14C	Cove Base Adhesive - Brown on 4" Black Cove	Building C, 1st Floor Interior - Women's Restroom Janitor Closet at Eastern Wall
17A	Window Putty System - White with Grey Sealant	Building C, Exterior - Eastern Side of Building at Southeastern Window Assembly
17B	Window Putty System - White with Grey Sealant	Building M, Exterior - Western Side of Building at Northern Window Assembly
17C	Window Putty System - White with Grey Sealant	Building M, Exterior - Eastern Side of Building at Southern Window Assembly
19A	Concrete Slab - Tan Tinted	Building E, Exterior - Central Courtyard Area at Approximate Center
19B	Concrete Slab - Tan Tinted	Building E, Exterior - Central Courtyard Area at Southwestern Side

Pre-Renovation Hazardous Materials Survey

Terra Linda High School ■ San Rafael, California
 February 21, 2020 ■ Terracon Project No. R1207238



Sample Number	Material Description	Sample Location
19C	Concrete Slab - Tan Tinted	Building E, Exterior - Central Courtyard Area at Southern Side
20A	Concrete Slab - Red Tinted	Building E, Exterior - Central Courtyard Area at Southeastern Corner
20B	Concrete Slab - Red Tinted	Building E, Exterior - Central Courtyard Area at Southwestern Corner
20C	Concrete Slab - Red Tinted	Building E, Exterior - Central Courtyard Area at Northwestern Corner
21A	Concrete Slab - Decorative Rock Inlay	Building E, Exterior - Central Courtyard Area, Southern Decorative Slab at Western Side
21B	Concrete Slab - Decorative Rock Inlay	Building E, Exterior - Central Courtyard Area, Southern Decorative Slab at Eastern Side
22A	Thick Exterior Paint - Light Blue	Building E, Exterior - Central Courtyard Area, Northern Walkway at Western Column
22B	Thick Exterior Paint - Light Blue	Building E, Exterior - Central Courtyard Area, Northern Walkway at Eastern Column
23A	Thick Exterior Paint - Beige	Building E, Exterior - Central Courtyard Area, Northern Walkway at Western Wide
23B	Thick Exterior Paint - Beige	Building E, Exterior - Central Courtyard Area, Northern Walkway at Eastern Side
24A	Walkway Concrete Slab Materials	Building E, Exterior - Central Courtyard Area, Northern Walkway at Western Wide
24B	Walkway Concrete Slab Materials	Building E, Exterior - Central Courtyard Area, Northern Walkway at Eastern Side
26A	Storefront Frame to Glass Sealant - Grey	Building L, Exterior - Northern Side of Building at Main Entry Way
26B	Storefront Frame to Glass Sealant - Grey	Building M, Exterior - Southern Side of Building at Main Entry Way
27A	Window Glazing Putty - Grey	Building I, Exterior - Northern Side of Building at Northwestern Window Assembly
27B	Window Glazing Putty - Grey	Building I, Exterior - Southern Side of Building at Southeastern Window Assembly
27C	Window Glazing Putty - Grey	Building I, Exterior - Southern Side of Building at Southeastern Window Assembly

Pre-Renovation Hazardous Materials Survey

Terra Linda High School ■ San Rafael, California
 February 21, 2020 ■ Terracon Project No. R1207238



Sample Number	Material Description	Sample Location
29A	Storefront Frame to Window Gasket - Black	Building I, Exterior - Southern Side of Building at Southwestern Entry Way
29B	Storefront Frame to Window Gasket - Black	Building I, Exterior - Southern Side of Building at Southern Door Way
32A	Concrete Slab Topping Material - Grey	Building E, Exterior - Northern 2nd Floor Walkway Area at Western Side
32B	Concrete Slab Topping Material - Grey	Building E, Exterior - Northern 2nd Floor Walkway Area at Approximate Center
32C	Concrete Slab Topping Material - Grey	Building E, Exterior - Northern 2nd Floor Walkway Area at Eastern Side
Gymnasium Building		
33A	Concrete Parge Coating - White/Yellow	Gymnasium Building, Interior - Main Open Gymnasium Area at Southwestern Entry Way
33B	Concrete Parge Coating - White/Yellow	Gymnasium Building, Interior - Main Open Gymnasium Area at Eastern Wall
33C	Concrete Parge Coating - White/Yellow	Gymnasium Building, Interior - Main Open Gymnasium Area at Southern Wall
34A	Perimeter Wall System - Concrete	Gymnasium Building, Interior - Main Open Gymnasium Area at Southwestern Entry Way
34B	Perimeter Wall System - Concrete	Gymnasium Building, Interior - Main Open Gymnasium Area at Southern Wall
34C	Perimeter Wall System - Concrete	Gymnasium Building, Interior - Main Open Gymnasium Area at Northern Wall Rough
35A	Ceiling Tile - 2'x4' White Lay - in System, Rough Textured	Gymnasium Building, Interior - Northern Gym Entry Lobby Area at Western Side
35B	Ceiling Tile - 2'x4' White Lay - in System, Rough Textured	Gymnasium Building, Interior - Northern Gym Entry Lobby Area at Eastern Side
Exterior Kiln Shed		
30A	Kiln Room Concrete Slab Materials	Building A, Exterior - Southern Kiln Shed Area at Southwestern Corner
30B	Kiln Room Concrete Slab Materials	Building A, Exterior - Southern Kiln Shed Area at Southeastern Corner
31A	Roofing Mastic - White	Building A, Exterior - Southern Kiln Shed Roof level at Southwestern Corner

Pre-Renovation Hazardous Materials Survey

Terra Linda High School ■ San Rafael, California
February 21, 2020 ■ Terracon Project No. R1207238



Sample Number	Material Description	Sample Location
31B	Roofing Mastic - White	Building A, Exterior - Southern Kiln Shed Roof level at Southern Side
31C	Roofing Mastic - White	Building A, Exterior - Southern Kiln Shed Roof level at Southeastern Side

3.2 Lead Containing Paint and Bulk Materials

Five (5) painted surfaces, three (3) glazing compounds and three (3) bulk materials were sampled for potential lead content during the survey. Of those, five (5) painted surfaces, one (1) glazing compound and two (2) bulk materials were reported to contain lead in detectable concentrations upon analysis using Flame Atomic Absorption Spectroscopy. A summary of lead sample locations and analytical results is below in Table III. Paint or materials reported with "<" is below the laboratory analytical reporting limit for the sample submitted.

Table III - Lead Containing Paints and Materials

Sample No.	Material Description	Sample Location	Lead Concentration
Main Classroom Building			
Pb-01	White Glazing Compound on 4" Ceramic Wall Tile System	Main Classroom Building C at 2 nd Floor Women's Restroom Area	900
Pb-02	Grey Glazing Compound on 2" Ceramic Floor Tile System	Main Classroom Building C at 2 nd Floor Women's Restroom Area	Not Detected <40
Pb-03	White Paint on Plaster Wall Systems	Main Classroom Building C at 2 nd Floor Men's Restroom Area	99
Pb-04	Grey Sealant Compound on Storefront Frame to Concrete Seals	Main Classroom Building C at Exterior Northern Entry Way Area	Not Detected <39
Pb-05	White Window Glazing Putty	Main Classroom Building C at Exterior Eastern Side of Building	42
Pb-06	Light Blue Paint on Concrete Column	Main Classroom Building E at Exterior Northern Walkway Area	2,000
Pb-07	Beige Paint on Concrete Slab	Main Classroom Building E at Exterior Northern Walkway Area	3,500
Pb-08	Grey Window Glazing Putty	Main Classroom Building I at Northern Eastern Side of Building	370

Pre-Renovation Hazardous Materials Survey

Terra Linda High School ■ San Rafael, California
February 21, 2020 ■ Terracon Project No. R1207238



Sample No.	Material Description	Sample Location	Lead Concentration
Gymnasium Building			
Pb-10	Clear Glazing Compound on Wooden Gymnasium Flooring	Gymnasium Building at Interior Main Open Gym Area	Not Detected <39
Pb-11	White Paint on Concrete Perimeter Wall Systems	Gymnasium Building at Interior Main Open Gym Area	Not Detected <39
Exterior Kiln Shed			
Pb-09	Blue Paint on Corrugated Metal Exterior Wall Systems	Main Classroom Building A Area at Southern Kiln Shed	220

ppm = parts per million

Uncharacterized paints and/or suspect materials should be assumed to contain lead until sampling and analysis prove otherwise.

3.3 PCB Sealants

Ten (10) samples from six (6) different types exterior sealant compounds were collected in order to analyze for potential polychlorinated biphenyl (PCB) content. PCBs were not detected above the analytical reporting limit in any of the materials sampled. The laboratory limits of detection reported were lower than 50 ppm, the threshold concentration for a PCB contaminated material. A summary of PCB sample locations and analytical results is below in Table IV.

Table IV - PCB Sealants

Material Description	Sample Location	PCB Concentration (ppm)
Main Classroom Building		
Storefront Frame to Concrete Sealant - Grey	Building C, Exterior - Northern Side of Building at Main Entry Way	Not Detected < 25
Window Putty System - White with Grey Sealant	Building C, Exterior - Eastern Side of Building at Southeastern Window Assembly Building M, Exterior - Western Side of Building at Northern Window Assembly Building M, Exterior - Western Side of Building at Southern Window Assembly	Not Detected < 25

Pre-Renovation Hazardous Materials Survey

Terra Linda High School ■ San Rafael, California
February 21, 2020 ■ Terracon Project No. R1207238



Material Description	Sample Location	PCB Concentration (ppm)
Rubberized Window Frame to Concrete Sealant - Black	Building C, Exterior - Eastern Side of Building at Southeastern Window Assembly Building M, Exterior - Western Side of Building at Northern Window Assembly	Not Detected < 25
Window Frame to Concrete Sealant - White	Building L, Exterior - Eastern Side of Building at Southern Window Assembly Building A, Exterior - Southern Side of Building at Western Window Assembly	Not Detected < 25
Storefront Frame to Glass Sealant - Grey	Building L, Exterior - Northern Side of Building at Main Entry Way	Not Detected < 25
Window Frame to Concrete Sealant - Grey	Building A, Exterior - Southern Side of Building at Southern Window Assembly	Not Detected < 25

ppm = parts per million

4.0 CONCLUSIONS

Based upon the survey results, Terracon concludes the following:

- The presence of detectable levels of asbestos was determined or assumed to exist in eight (8) of the thirty-five materials identified during the course of the survey.
- Asbestos containing materials were only identified within the path of construction described within the Main Classroom Building of the affected Terra Linda Campus site.
- If additional suspect materials that have not been characterized as ACM or non-ACM in this report are discovered during construction related processes, these materials should be assumed to contain asbestos and be treated accordingly until proven otherwise by appropriate sampling and laboratory analysis.
- Lead was detected above the laboratory detection limit in seven (7) of the eleven (11) materials sampled, including various paints and glazing compounds on building surfaces and bulk building materials.
- Detectable PCB concentrations were not reported in any of the building sealants identified during the captioned survey event. All reported detection limits were noted to be below the current regulatory threshold of fifty (50) parts per million.

5.0 REGULATORY OVERVIEW

5.1 Asbestos

The Asbestos NESHAP program in California is enforced by federal, state, and county Asbestos NESHAP Coordinators. For projects occurring in the Emeryville, California, the Bay Area Air Quality Management District (BAAQMD) has been delegated authority from the EPA to enforce the Asbestos NESHAP within its respective jurisdictional boundaries, excluding tribal lands.

The asbestos NESHAP (40 CFR Part 61, Subpart M) regulates asbestos fiber emissions and asbestos waste disposal practices. The asbestos NESHAP regulation also requires the identification and classification of existing ACM according to friability prior to demolition or renovation activity. Friable ACM is a material containing more than 1% asbestos that, when dry, can be crumbled, pulverized or reduced to powder by hand pressure. All friable ACM is considered regulated asbestos-containing material (RACM). The NESHAP regulation is implemented locally by the BAAQMD in their Regulation 11, Rule 2.

The asbestos NESHAP regulation classifies ACM as either RACM, Category I non-friable ACM or Category II non-friable ACM. RACM includes all friable ACM, along with Category I and Category II non-friable ACM that has become friable, will be or has been subjected to sanding, grinding, cutting or abrading, or ACM that has a high probability of becoming or has become crumbled, pulverized, or reduced to powder in the course of renovation or demolition activity. Category I non-friable ACM are exclusively asbestos-containing packings, gaskets, resilient floor coverings, and asphalt roofing products that contain more than 1% asbestos. Category II non-friable ACM are all other non-friable materials other than Category I non-friable ACM that contain more than 1% asbestos.

The California Department of Occupational Safety and Health (DOSH) asbestos standard for construction (Title 8 CCR 1529) regulates workplace exposure to asbestos. The DOSH standard requires that employee exposure to airborne asbestos must not exceed 0.1 fibers per cubic centimeter of air (0.1 f/cc) as an eight-hour time weighted average (TWA) and not exceed 1.0 fibers per cubic centimeter of air (1.0 f/cc) over a 30-minute time period known as an excursion limit (EL). The TWA and EL are known as DOSH's asbestos permissible exposure limits (PELs). The DOSH standard classifies construction and maintenance activities which could disturb ACM and specifies work practices and precautions which employers must follow when engaging in each class of regulated work.

5.2 Lead Containing Paint/Materials

Personnel performing demolition activities that may disturb painted components or materials with concentrations of lead above the designated analytical detection limit should comply with all current DOSH regulations in order to minimize employee exposure. DOSH defines lead containing paint as

Pre-Renovation Hazardous Materials Survey

Terra Linda High School ■ San Rafael, California
February 21, 2020 ■ Terracon Project No. R1207238



a paint, which contains lead, regardless of the concentration. Currently, any proposed renovation/demolition is subject to the DOSH regulations (Title 8 CCR 1532.1 – Lead Exposure in Construction). The DOSH regulation defines specific training requirements, engineering controls and working practices for construction personnel subject to this standard. Occupational exposure to lead occurring in the course of construction work, including maintenance activities, painting, alteration and repairs is subject to the DOSH Lead Exposure in Construction standard.

Construction work covered by Title 8 CCR 1532.1 includes any repair or renovation activities or other activities that disturb in-place lead-containing materials, but does not include routine cleaning and repainting where there is insignificant damage, wear, or corrosion of existing lead-containing coatings or substrates. Employers must assure that no employee will be exposed to lead at concentrations greater than 50 micrograms per cubic meter ($\mu\text{g}/\text{m}^3$) averaged over an eight-hour period without adequate protection. The DOSH Standard also establishes an action level of 30 $\mu\text{g}/\text{m}^3$ which if exceeded triggers the requirement for medical monitoring.

Proper waste stream categorization is required for the disposal of all lead containing materials and painted construction debris with total lead content that exceeds 50 ppm. The debris should be classified as hazardous waste if lead waste concentrations exceed either the total lead concentration or soluble lead concentration regulatory limits. Total lead concentration is determined by Total Threshold Limit Concentration (TTLC). Soluble or leachable lead is determined by the Soluble Threshold Limit Concentration (STLC, California required test) and/or Toxicity Characteristic Leaching Procedure (TCLP) (Federal EPA required test). Regulatory limits characterize a lead waste as a hazardous waste if lead concentrations exceed 1,000 ppm by TTLC or 5 milligrams per liter by STLC or TCLP.

The above overview is not intended to be inclusive of all potentially pertinent regulatory information. The relevant EPA and OSHA standards should be consulted prior to undertaking activities involving the demolition, renovation, or maintenance of surfaces coated with lead containing paints.

6.0 LIMITATIONS / GENERAL COMMENTS

Terracon performed limited destructive testing such as selective demolition of walls, dismantling of equipment or removal of protective coverings during the survey. Uncharacterized hidden materials may exist under existing finishes, equipment or structural materials.

This hazardous materials survey was conducted in a manner consistent with the level of care and skill ordinarily exercised by members of the profession currently practicing under similar conditions in the same locale. The results, findings, conclusions and recommendations expressed in this report are based on conditions observed during our survey at the subject site. The information contained in this report is relevant to the date on which this survey was performed, and should not be relied upon to represent conditions at a later date. This report has been prepared on behalf of and exclusively for use by San Rafael City Schools for specific application

Pre-Renovation Hazardous Materials Survey

Terra Linda High School ■ San Rafael, California

February 21, 2020 ■ Terracon Project No. R1207238



to their project as discussed. This report is not a bidding document. Contractors or consultants reviewing this report must draw their own conclusions regarding further investigation or remediation deemed necessary. Terracon does not warrant the work of regulatory agencies, laboratories or other third parties supplying information which may have been used in the preparation of this report. No warranty, express or implied is made.

APPENDIX A

ASBESTOS ANALYTICAL LABORATORY DATA



Report for:

William Frieszell
Terracon Consultants, Inc. - Emeryville
1466 66th Street
Emeryville, CA 94608

Regarding: Project: R1207238; Terra Linda High School, Limited 2020 Hazardous Materials Survey, 320 Nova Albion
EML ID: 2358642

Approved by:

Dates of Analysis:
Asbestos PLM: 02-20-2020



Approved Signatory
Renee Luna-Trepczynski

Service SOPs: Asbestos PLM (EPA 40CFR App E to Sub E of Part 763 & EPA METHOD 600/R-93-116, SOP EM-AS-S-1267)
NVLAP Lab Code 500031-0

All samples were received in acceptable condition unless noted in the Report Comments portion in the body of the report. The results relate only to the samples as received. The results include an inherent uncertainty of measurement associated with estimating percentages by polarized light microscopy. Measurement uncertainty data for sample results with >1% asbestos concentration can be provided when requested.

Eurofins EMLab P&K ("the Company") shall have no liability to the client or the client's customer with respect to decisions or recommendations made, actions taken or courses of conduct implemented by either the client or the client's customer as a result of or based upon the Test Results. In no event shall the Company be liable to the client with respect to the Test Results except for the Company's own willful misconduct or gross negligence nor shall the Company be liable for incidental or consequential damages or lost profits or revenues to the fullest extent such liability may be disclaimed by law, even if the Company has been advised of the possibility of such damages, lost profits or lost revenues. In no event shall the Company's liability with respect to the Test Results exceed the amount paid to the Company by the client therefor.

Client: Terracon Consultants, Inc. - Emeryville
C/O: William Frieszell
Re: R1207238; Terra Linda High School, Limited
2020 Hazardous Materials Survey, 320 Nova Albion

Date of Sampling: 02-17-2020
Date of Receipt: 02-19-2020
Date of Report: 02-20-2020

ASBESTOS PLM REPORT

Total Samples Submitted:	80
Total Samples Analyzed:	80
Total Samples with Layer Asbestos Content > 1%:	11

Location: 1A, Interior Wall Systems-Drywall and Joint Compound; Building A, 2nd Floor Interior-Classroom 58 Area at Southern Wall

Lab ID-Version‡: 11236873-1

Sample Layers	Asbestos Content
White Compound	ND
Cream Tape	ND
White Joint Compound	ND
Light Gray Drywall with Brown Paper	ND
Composite Non-Asbestos Content:	15% Cellulose < 1% Glass Fibers
Sample Composite Homogeneity:	Poor

Location: 1B, Interior Wall Systems-Drywall and Joint Compound; Building A, 2nd Floor Interior-Classroom 58 Area at Northeastern Corner

Lab ID-Version‡: 11236874-1

Sample Layers	Asbestos Content
White Joint Compound	ND
Light Gray Drywall with Brown Paper	ND
Composite Non-Asbestos Content:	10% Cellulose < 1% Glass Fibers
Sample Composite Homogeneity:	Moderate

Location: 1C, Interior Wall Systems-Drywall and Joint Compound; Building A, 2nd Floor Interior-Classroom 58 Area at Southeastern Corner

Lab ID-Version‡: 11236875-1

Sample Layers	Asbestos Content
White Compound	ND
Cream Tape	ND
White Joint Compound	ND
Light Gray Drywall with Brown Paper	ND
Composite Non-Asbestos Content:	15% Cellulose < 1% Glass Fibers
Sample Composite Homogeneity:	Poor

The test report shall not be reproduced except in full, without written approval of the laboratory. The report must not be used by the client to claim product certification, approval, or endorsement by any agency of the federal government. Eurofins EMLab P&K reserves the right to dispose of all samples after a period of thirty (30) days, according to all state and federal guidelines, unless otherwise specified.

Inhomogeneous samples are separated into homogeneous subsamples and analyzed individually. ND means no fibers were detected. When detected, the minimum detection and reporting limit is less than 1% unless point counting is performed. Floor tile samples may contain large amounts of interference material and it is recommended that the sample be analyzed by gravimetric point count analysis to lower the detection limit and to aid in asbestos identification.

‡ A "Version" indicated by "-x" after the Lab ID# with a value greater than 1 indicates a sample with amended data. The revision number is reflected by the value of "x".

Client: Terracon Consultants, Inc. - Emeryville
 C/O: William Frieszell
 Re: R1207238; Terra Linda High School, Limited
 2020 Hazardous Materials Survey, 320 Nova Albion

Date of Sampling: 02-17-2020
 Date of Receipt: 02-19-2020
 Date of Report: 02-20-2020

ASBESTOS PLM REPORT

Location: 2A, Ceiling Tile-2'x2' White Lay-in System, Rough Textured; Building A, 2nd Floor Interior-Classroom 58 Area at Southern Side

Lab ID-Version‡: 11236876-1

Sample Layers	Asbestos Content
White Ceiling Tile with White Surface	ND
Composite Non-Asbestos Content:	75% Glass Fibers < 1% Cellulose
Sample Composite Homogeneity:	Good

The test report shall not be reproduced except in full, without written approval of the laboratory. The report must not be used by the client to claim product certification, approval, or endorsement by any agency of the federal government. Eurofins EMLab P&K reserves the right to dispose of all samples after a period of thirty (30) days, according to all state and federal guidelines, unless otherwise specified.

Inhomogeneous samples are separated into homogeneous subsamples and analyzed individually. ND means no fibers were detected. When detected, the minimum detection and reporting limit is less than 1% unless point counting is performed. Floor tile samples may contain large amounts of interference material and it is recommended that the sample be analyzed by gravimetric point count analysis to lower the detection limit and to aid in asbestos identification.

‡ A "Version" indicated by -"x" after the Lab ID# with a value greater than 1 indicates a sample with amended data. The revision number is reflected by the value of "x".

Client: Terracon Consultants, Inc. - Emeryville
C/O: William Frieszell
Re: R1207238; Terra Linda High School, Limited
2020 Hazardous Materials Survey, 320 Nova Albion

Date of Sampling: 02-17-2020
Date of Receipt: 02-19-2020
Date of Report: 02-20-2020

ASBESTOS PLM REPORT

Location: 2B, Ceiling Tile-2'x2' White Lay-in System, Rough Textured; Building A, 2nd Floor Interior-Classroom 58 Area at Northeastern Corner

Lab ID-Version‡: 11236877-1

Sample Layers	Asbestos Content
White Ceiling Tile with White Surface	ND
Composite Non-Asbestos Content:	75% Glass Fibers < 1% Cellulose
Sample Composite Homogeneity:	Good

Location: 2C, Ceiling Tile-2'x2' White Lay-in System, Rough Textured; Building A, 2nd Floor Interior-Classroom 58 Area at Southeastern Corner

Lab ID-Version‡: 11236878-1

Sample Layers	Asbestos Content
White Ceiling Tile with White Surface	ND
Composite Non-Asbestos Content:	75% Glass Fibers < 1% Cellulose
Sample Composite Homogeneity:	Good

Location: 3A, Floor Tile System -12" White with Tan Flecks and Yellow Mastic; Building A, 2nd Floor Interior-Classroom 58 Area at Northeastern Sink

Lab ID-Version‡: 11236879-1

Sample Layers	Asbestos Content
White Floor Tile	ND
Yellow Mastic	ND
Gray Leveling Compound	ND
Composite Non-Asbestos Content:	< 1% Cellulose
Sample Composite Homogeneity:	Poor

Location: 3B, Floor Tile System -12" White with Tan Flecks and Yellow Mastic; Building A, 2nd Floor Interior-Classroom 58 Area, Southeastern Store Room at Northern Side

Lab ID-Version‡: 11236880-1

Sample Layers	Asbestos Content
White Floor Tile	ND
Yellow Mastic	ND
Sample Composite Homogeneity:	Moderate

The test report shall not be reproduced except in full, without written approval of the laboratory. The report must not be used by the client to claim product certification, approval, or endorsement by any agency of the federal government. Eurofins EMLab P&K reserves the right to dispose of all samples after a period of thirty (30) days, according to all state and federal guidelines, unless otherwise specified.

Inhomogeneous samples are separated into homogeneous subsamples and analyzed individually. ND means no fibers were detected. When detected, the minimum detection and reporting limit is less than 1% unless point counting is performed. Floor tile samples may contain large amounts of interference material and it is recommended that the sample be analyzed by gravimetric point count analysis to lower the detection limit and to aid in asbestos identification.

‡ A "Version" indicated by -"x" after the Lab ID# with a value greater than 1 indicates a sample with amended data. The revision number is reflected by the value of "x".

Client: Terracon Consultants, Inc. - Emeryville
C/O: William Frieszell
Re: R1207238; Terra Linda High School, Limited
2020 Hazardous Materials Survey, 320 Nova Albion

Date of Sampling: 02-17-2020
Date of Receipt: 02-19-2020
Date of Report: 02-20-2020

ASBESTOS PLM REPORT

Location: 3C, Floor Tile System -12" White with Tan Flecks and Yellow Mastic; Building A, 2nd Floor Interior-Classroom 58 Area at Western Side

Lab ID-Version‡: 11236881-1

Sample Layers	Asbestos Content
White Floor Tile	ND
Yellow Mastic	ND
Sample Composite Homogeneity: Moderate	

Location: 4A, Interior Window Frame Sealant-White; Building A, 2nd Floor Interior-Classroom 58 Area at Northwestern Corner

Lab ID-Version‡: 11236882-1

Sample Layers	Asbestos Content
White Sealant with Cream Paint	ND
Gray Sealant	3% Chrysotile
Sample Composite Homogeneity: Moderate	

Location: 4B, Interior Window Frame Sealant-White; Building A, 2nd Floor Interior-Classroom 58 Area at Northeastern Corner

Lab ID-Version‡: 11236883-1

Sample Layers	Asbestos Content
White Sealant with Cream Paint	ND
Gray Sealant	3% Chrysotile
Sample Composite Homogeneity: Moderate	

Location: 5A, Cove Base Adhesive-White on 4" Black Cove; Building A, 2nd Floor Interior-Classroom 58 Area at Northeastern Sink

Lab ID-Version‡: 11236884-1

Sample Layers	Asbestos Content
Dark Gray Baseboard	ND
White Adhesive	ND
Sample Composite Homogeneity: Moderate	

The test report shall not be reproduced except in full, without written approval of the laboratory. The report must not be used by the client to claim product certification, approval, or endorsement by any agency of the federal government. Eurofins EMLab P&K reserves the right to dispose of all samples after a period of thirty (30) days, according to all state and federal guidelines, unless otherwise specified.

Inhomogeneous samples are separated into homogeneous subsamples and analyzed individually. ND means no fibers were detected. When detected, the minimum detection and reporting limit is less than 1% unless point counting is performed. Floor tile samples may contain large amounts of interference material and it is recommended that the sample be analyzed by gravimetric point count analysis to lower the detection limit and to aid in asbestos identification.

‡ A "Version" indicated by -"x" after the Lab ID# with a value greater than 1 indicates a sample with amended data. The revision number is reflected by the value of "x".

Client: Terracon Consultants, Inc. - Emeryville
 C/O: William Frieszell
 Re: R1207238; Terra Linda High School, Limited
 2020 Hazardous Materials Survey, 320 Nova Albion

Date of Sampling: 02-17-2020
 Date of Receipt: 02-19-2020
 Date of Report: 02-20-2020

ASBESTOS PLM REPORT

**Location: 5B, Cove Base Adhesive-White on 4" Black Cove; Building A, 2nd Floor
 Interior-Classroom 58 Area, Southeastern Store Room at Northern Side**

Lab ID-Version‡: 11236885-1

Sample Layers	Asbestos Content
Dark Gray Baseboard	ND
White Adhesive	ND
Sample Composite Homogeneity:	Moderate

**Location: 6A, Sink Undercoating-Grey; Building A, 2nd Floor Interior-Classroom 58
 Area at Northeastern Sink**

Lab ID-Version‡: 11236886-1

Sample Layers	Asbestos Content
Gray Sink Undercoating	ND
Composite Non-Asbestos Content:	10% Cellulose
Sample Composite Homogeneity:	Good

**Location: 6B, Sink Undercoating-Grey; Building A, 2nd Floor Interior-Classroom 58
 Area at Northwestern Sink**

Lab ID-Version‡: 11236887-1

Sample Layers	Asbestos Content
Gray Sink Undercoating	ND
Composite Non-Asbestos Content:	10% Cellulose
Sample Composite Homogeneity:	Good

**Location: 6C, Sink Undercoating-Grey; Building A, 2nd Floor Interior-Classroom 58
 Area at Southwestern Sink Sink**

Lab ID-Version‡: 11236888-1

Sample Layers	Asbestos Content
Gray Sink Undercoating	ND
Composite Non-Asbestos Content:	10% Cellulose
Sample Composite Homogeneity:	Good

The test report shall not be reproduced except in full, without written approval of the laboratory. The report must not be used by the client to claim product certification, approval, or endorsement by any agency of the federal government. Eurofins EMLab P&K reserves the right to dispose of all samples after a period of thirty (30) days, according to all state and federal guidelines, unless otherwise specified.

Inhomogeneous samples are separated into homogeneous subsamples and analyzed individually. ND means no fibers were detected. When detected, the minimum detection and reporting limit is less than 1% unless point counting is performed. Floor tile samples may contain large amounts of interference material and it is recommended that the sample be analyzed by gravimetric point count analysis to lower the detection limit and to aid in asbestos identification.

‡ A "Version" indicated by "-x" after the Lab ID# with a value greater than 1 indicates a sample with amended data. The revision number is reflected by the value of "x".

Client: Terracon Consultants, Inc. - Emeryville
 C/O: William Frieszell
 Re: R1207238; Terra Linda High School, Limited
 2020 Hazardous Materials Survey, 320 Nova Albion

Date of Sampling: 02-17-2020
 Date of Receipt: 02-19-2020
 Date of Report: 02-20-2020

ASBESTOS PLM REPORT

**Location: 7A, Ceramic Wall Tile System -4" Tan/White Tiles with Grout and Mastic;
 Building C, 2nd Floor Interior-Women's Restroom Area at Western Damaged Area**

Lab ID-Version‡: 11236889-1

Sample Layers	Asbestos Content
White Ceramic Tile	ND
White Grout	ND
Yellow Mastic	ND
Sample Composite Homogeneity: Poor	

**Location: 7B, Ceramic Wall Tile System -4" Tan/White Tiles with Grout and Mastic;
 Building C, 2nd Floor Interior-Women's Restroom Area at Western Damaged Area**

Lab ID-Version‡: 11236890-1

Sample Layers	Asbestos Content
White Ceramic Tile	ND
White Grout	ND
Yellow Mastic	ND
Sample Composite Homogeneity: Poor	

**Location: 8A, Interior Wall Systems-White Plaster with Beige Coating; Building C, 2nd
 Floor Interior-Women's Restroom Janitor Closet at Southeastern Corner**

Lab ID-Version‡: 11236891-1

Sample Layers	Asbestos Content
Beige Skim Coat	ND
White Base Coat	ND
Sample Composite Homogeneity: Moderate	

**Location: 8B, Interior Wall Systems-White Plaster with Beige Coating; Building C, 2nd
 Floor Interior-Men's Restroom Area at Northwestern Corner**

Lab ID-Version‡: 11236892-1

Sample Layers	Asbestos Content
White Plaster with Multilayered Paint	ND
Sample Composite Homogeneity: Good	

The test report shall not be reproduced except in full, without written approval of the laboratory. The report must not be used by the client to claim product certification, approval, or endorsement by any agency of the federal government. Eurofins EMLab P&K reserves the right to dispose of all samples after a period of thirty (30) days, according to all state and federal guidelines, unless otherwise specified.

Inhomogeneous samples are separated into homogeneous subsamples and analyzed individually. ND means no fibers were detected. When detected, the minimum detection and reporting limit is less than 1% unless point counting is performed. Floor tile samples may contain large amounts of interference material and it is recommended that the sample be analyzed by gravimetric point count analysis to lower the detection limit and to aid in asbestos identification.

‡ A "Version" indicated by "-x" after the Lab ID# with a value greater than 1 indicates a sample with amended data. The revision number is reflected by the value of "x".

Client: Terracon Consultants, Inc. - Emeryville
 C/O: William Frieszell
 Re: R1207238; Terra Linda High School, Limited
 2020 Hazardous Materials Survey, 320 Nova Albion

Date of Sampling: 02-17-2020
 Date of Receipt: 02-19-2020
 Date of Report: 02-20-2020

ASBESTOS PLM REPORT

Location: 8C, Interior Wall Systems-White Plaster with Beige Coating; Building C, 1st Floor Interior-Women's Restroom Janitor Closet at Southern Wall

Lab ID-Version‡: 11236893-1

Sample Layers	Asbestos Content
Beige Skim Coat	ND
White Base Coat	ND
Sample Composite Homogeneity:	Moderate

Location: 9A, Cove Base Adhesive-Brown on 4" Blue Cove; Building C, 2nd Floor Interior-Men's Restroom Area at Northwestern Corner

Lab ID-Version‡: 11236894-1

Sample Layers	Asbestos Content
Blue Baseboard	ND
Yellow Adhesive	ND
Brown Adhesive with White Paint	ND
White Compound with White Paint	ND
Sample Composite Homogeneity:	Poor

Location: 10A, Ceramic Floor Tile System-2" Grey/White Tiles with Grout and Mortar; Building C, 2nd Floor Interior-Women's Restroom Janitor Closet at Entry Way

Lab ID-Version‡: 11236895-1

Sample Layers	Asbestos Content
Light Gray Ceramic Tile	ND
Gray Grout	ND
Light Gray Mortar	ND
Sample Composite Homogeneity:	Poor

The test report shall not be reproduced except in full, without written approval of the laboratory. The report must not be used by the client to claim product certification, approval, or endorsement by any agency of the federal government. Eurofins EMLab P&K reserves the right to dispose of all samples after a period of thirty (30) days, according to all state and federal guidelines, unless otherwise specified.

Inhomogeneous samples are separated into homogeneous subsamples and analyzed individually. ND means no fibers were detected. When detected, the minimum detection and reporting limit is less than 1% unless point counting is performed. Floor tile samples may contain large amounts of interference material and it is recommended that the sample be analyzed by gravimetric point count analysis to lower the detection limit and to aid in asbestos identification.

‡ A "Version" indicated by "-x" after the Lab ID# with a value greater than 1 indicates a sample with amended data. The revision number is reflected by the value of "x".

Client: Terracon Consultants, Inc. - Emeryville
C/O: William Frieszell
Re: R1207238; Terra Linda High School, Limited
2020 Hazardous Materials Survey, 320 Nova Albion

Date of Sampling: 02-17-2020
Date of Receipt: 02-19-2020
Date of Report: 02-20-2020

ASBESTOS PLM REPORT

**Location: 10B, Ceramic Floor Tile System-2" Grey/White Tiles with Grout and Mortar;
Building C, 2nd Floor Interior-Women's Restroom Janitor Closet at Entry Way**

Lab ID-Version‡: 11236896-1

Sample Layers	Asbestos Content
Light Gray Ceramic Tile	ND
Gray Grout	ND
Light Gray Mortar	ND
Sample Composite Homogeneity: Poor	

The test report shall not be reproduced except in full, without written approval of the laboratory. The report must not be used by the client to claim product certification, approval, or endorsement by any agency of the federal government. Eurofins EMLab P&K reserves the right to dispose of all samples after a period of thirty (30) days, according to all state and federal guidelines, unless otherwise specified.

Inhomogeneous samples are separated into homogeneous subsamples and analyzed individually. ND means no fibers were detected. When detected, the minimum detection and reporting limit is less than 1% unless point counting is performed. Floor tile samples may contain large amounts of interference material and it is recommended that the sample be analyzed by gravimetric point count analysis to lower the detection limit and to aid in asbestos identification.

‡ A "Version" indicated by "-x" after the Lab ID# with a value greater than 1 indicates a sample with amended data. The revision number is reflected by the value of "x".

Client: Terracon Consultants, Inc. - Emeryville
 C/O: William Frieszell
 Re: R1207238; Terra Linda High School, Limited
 2020 Hazardous Materials Survey, 320 Nova Albion

Date of Sampling: 02-17-2020
 Date of Receipt: 02-19-2020
 Date of Report: 02-20-2020

ASBESTOS PLM REPORT

**Location: 10C, Ceramic Floor Tile System-2" Grey/White Tiles with Grout and Mortar;
 Building C, 1st Floor Interior-Women's Restroom Janitor Closet at Entry Way**

Lab ID-Version‡: 11236897-1

Sample Layers	Asbestos Content
Light Gray Ceramic Tile	ND
Gray Grout	ND
Light Gray Mortar	ND
Sample Composite Homogeneity: Poor	

**Location: 11A, Floor Tile System-12" White with Blue Flecks Over Tan Tile with Black
 Mastic; Building C, 2nd Floor Interior-Men's Restroom Area at Western Entry Way**

Lab ID-Version‡: 11236898-1

Sample Layers	Asbestos Content
White Floor Tile	ND
Yellow Mastic	ND
Tan Floor Tile	5% Chrysotile
Black Mastic	3% Chrysotile
Sample Composite Homogeneity: Poor	

**Location: 14A, Cove Base Adhesive-Brown on 4" Black Cove; Building C, 2nd Floor
 Interior-Women's Restroom Janitor Closet at Southeastern Corner**

Lab ID-Version‡: 11236899-1

Sample Layers	Asbestos Content
Black Baseboard	ND
Brown Adhesive	ND
Sample Composite Homogeneity: Moderate	

The test report shall not be reproduced except in full, without written approval of the laboratory. The report must not be used by the client to claim product certification, approval, or endorsement by any agency of the federal government. Eurofins EMLab P&K reserves the right to dispose of all samples after a period of thirty (30) days, according to all state and federal guidelines, unless otherwise specified.

Inhomogeneous samples are separated into homogeneous subsamples and analyzed individually. ND means no fibers were detected. When detected, the minimum detection and reporting limit is less than 1% unless point counting is performed. Floor tile samples may contain large amounts of interference material and it is recommended that the sample be analyzed by gravimetric point count analysis to lower the detection limit and to aid in asbestos identification.

‡ A "Version" indicated by "-x" after the Lab ID# with a value greater than 1 indicates a sample with amended data. The revision number is reflected by the value of "x".

Client: Terracon Consultants, Inc. - Emeryville
C/O: William Frieszell
Re: R1207238; Terra Linda High School, Limited
2020 Hazardous Materials Survey, 320 Nova Albion

Date of Sampling: 02-17-2020
Date of Receipt: 02-19-2020
Date of Report: 02-20-2020

ASBESTOS PLM REPORT

**Location: 14B, Cove Base Adhesive-Brown on 4" Black Cove; Building C, 2nd Floor
Interior-Women's Restroom Janitor Closet at Southeastern Corner**

Lab ID-Version‡: 11236900-1

Sample Layers	Asbestos Content
Black Baseboard	ND
Brown Adhesive	ND
Sample Composite Homogeneity:	Moderate

The test report shall not be reproduced except in full, without written approval of the laboratory. The report must not be used by the client to claim product certification, approval, or endorsement by any agency of the federal government. Eurofins EMLab P&K reserves the right to dispose of all samples after a period of thirty (30) days, according to all state and federal guidelines, unless otherwise specified.

Inhomogeneous samples are separated into homogeneous subsamples and analyzed individually. ND means no fibers were detected. When detected, the minimum detection and reporting limit is less than 1% unless point counting is performed. Floor tile samples may contain large amounts of interference material and it is recommended that the sample be analyzed by gravimetric point count analysis to lower the detection limit and to aid in asbestos identification.

‡ A "Version" indicated by "-x" after the Lab ID# with a value greater than 1 indicates a sample with amended data. The revision number is reflected by the value of "x".

Client: Terracon Consultants, Inc. - Emeryville
 C/O: William Frieszell
 Re: R1207238; Terra Linda High School, Limited
 2020 Hazardous Materials Survey, 320 Nova Albion

Date of Sampling: 02-17-2020
 Date of Receipt: 02-19-2020
 Date of Report: 02-20-2020

ASBESTOS PLM REPORT

**Location: 14C, Cove Base Adhesive-Brown on 4" Black Cove; Building C, 1st Floor
 Interior-Women's Restroom Janitor Closet at Eastern Wall**

Lab ID-Version‡: 11236901-1

Sample Layers	Asbestos Content
Black Baseboard	ND
Brown Adhesive	ND
Sample Composite Homogeneity: Moderate	

**Location: 15A, Floor Tile System-12" White with Blue Flecks and Black Mastic; Building
 C, 1st Floor Interior-Men's Area at Southern Side**

Lab ID-Version‡: 11236902-1

Sample Layers	Asbestos Content
White Floor Tile	ND
Yellow Mastic	ND
Gray Leveling Compound	ND
Black Mastic	2% Chrysotile
Sample Composite Homogeneity: Poor	

**Location: 16A, Storefront Frame to Concrete Sealant-Grey; Building C, Exterior-
 Northern Side of Building at Main Entry Way**

Lab ID-Version‡: 11236903-1

Sample Layers	Asbestos Content
Silver Sealant with Multilayered Paint	< 1% Chrysotile
Sample Composite Homogeneity: Good	

**Location: 16B, Storefront Frame to Concrete Sealant-Grey; Building L, Exterior-
 Northern Side of Building at Main Entry Way**

Lab ID-Version‡: 11236904-1

Sample Layers	Asbestos Content
Light Gray Sealant with Multilayered Paint	7% Chrysotile
Gray Sealant	ND
Composite Non-Asbestos Content: 2% Talc	
Sample Composite Homogeneity: Moderate	

The test report shall not be reproduced except in full, without written approval of the laboratory. The report must not be used by the client to claim product certification, approval, or endorsement by any agency of the federal government. Eurofins EMLab P&K reserves the right to dispose of all samples after a period of thirty (30) days, according to all state and federal guidelines, unless otherwise specified.

Inhomogeneous samples are separated into homogeneous subsamples and analyzed individually. ND means no fibers were detected. When detected, the minimum detection and reporting limit is less than 1% unless point counting is performed. Floor tile samples may contain large amounts of interference material and it is recommended that the sample be analyzed by gravimetric point count analysis to lower the detection limit and to aid in asbestos identification.

‡ A "Version" indicated by "-x" after the Lab ID# with a value greater than 1 indicates a sample with amended data. The revision number is reflected by the value of "x".

Client: Terracon Consultants, Inc. - Emeryville
 C/O: William Frieszell
 Re: R1207238; Terra Linda High School, Limited
 2020 Hazardous Materials Survey, 320 Nova Albion

Date of Sampling: 02-17-2020
 Date of Receipt: 02-19-2020
 Date of Report: 02-20-2020

ASBESTOS PLM REPORT

Location: 16C, Storefront Frame to Concrete Sealant-Grey; Building M, Exterior-Southern Side of Building at Main Entry Way

Lab ID-Version‡: 11236905-1

Sample Layers	Asbestos Content
Gray Sealant with Multilayered Paint	2% Chrysotile
Sample Composite Homogeneity: Good	

Location: 17A, Window Putty System-White with Grey Sealant; Building C, Exterior-Eastern Side of Building at Southeastern Window Assembly

Lab ID-Version‡: 11236906-1

Sample Layers	Asbestos Content
White Window Putty	ND
Gray Sealant	ND
Sample Composite Homogeneity: Moderate	

Location: 17B, Window Putty System-White with Grey Sealant; Building M, Exterior-Western Side of Building at Northern Window Assembly

Lab ID-Version‡: 11236907-1

Sample Layers	Asbestos Content
White Window Putty	ND
Sample Composite Homogeneity: Good	

Location: 17C, Window Putty System-White with Grey Sealant; Building M, Exterior-Eastern Side of Building at Southern Window Assembly

Lab ID-Version‡: 11236908-1

Sample Layers	Asbestos Content
Gray Sealant	ND
Sample Composite Homogeneity: Good	

The test report shall not be reproduced except in full, without written approval of the laboratory. The report must not be used by the client to claim product certification, approval, or endorsement by any agency of the federal government. Eurofins EMLab P&K reserves the right to dispose of all samples after a period of thirty (30) days, according to all state and federal guidelines, unless otherwise specified.

Inhomogeneous samples are separated into homogeneous subsamples and analyzed individually. ND means no fibers were detected. When detected, the minimum detection and reporting limit is less than 1% unless point counting is performed. Floor tile samples may contain large amounts of interference material and it is recommended that the sample be analyzed by gravimetric point count analysis to lower the detection limit and to aid in asbestos identification.

‡ A "Version" indicated by "-x" after the Lab ID# with a value greater than 1 indicates a sample with amended data. The revision number is reflected by the value of "x".

Client: Terracon Consultants, Inc. - Emeryville
C/O: William Frieszell
Re: R1207238; Terra Linda High School, Limited
2020 Hazardous Materials Survey, 320 Nova Albion

Date of Sampling: 02-17-2020
Date of Receipt: 02-19-2020
Date of Report: 02-20-2020

ASBESTOS PLM REPORT

**Location: 18A, Rubberized Window Frame to Concrete Sealant-Black; Building C,
Exterior-Eastern Side of Building at Southeastern Window Assembly**

Lab ID-Version‡: 11236909-1

Sample Layers	Asbestos Content
Black Sealant with Multilayered Paint	ND
Sample Composite Homogeneity: Good	

**Location: 18B, Rubberized Window Frame to Concrete Sealant-Black; Building M,
Exterior-Western Side of Building at Northern Window Assembly**

Lab ID-Version‡: 11236910-1

Sample Layers	Asbestos Content
Gray Sealant with Multilayered Paint	3% Chrysotile
Sample Composite Homogeneity: Good	

**Location: 18C, Rubberized Window Frame to Concrete Sealant-Black; Building M,
Exterior-Western Side of Building at Southern Window Assembly**

Lab ID-Version‡: 11236911-1

Sample Layers	Asbestos Content
Gray Sealant with Multilayered Paint	3% Chrysotile
Sample Composite Homogeneity: Good	

**Location: 19A, Concrete Slab-Tan Tinted; Building E, Exterior-Central Courtyard Area
at Approximate Center**

Lab ID-Version‡: 11236912-1

Sample Layers	Asbestos Content
Brown/Gray Concrete	ND
Sample Composite Homogeneity: Moderate	

The test report shall not be reproduced except in full, without written approval of the laboratory. The report must not be used by the client to claim product certification, approval, or endorsement by any agency of the federal government. Eurofins EMLab P&K reserves the right to dispose of all samples after a period of thirty (30) days, according to all state and federal guidelines, unless otherwise specified.

Inhomogeneous samples are separated into homogeneous subsamples and analyzed individually. ND means no fibers were detected. When detected, the minimum detection and reporting limit is less than 1% unless point counting is performed. Floor tile samples may contain large amounts of interference material and it is recommended that the sample be analyzed by gravimetric point count analysis to lower the detection limit and to aid in asbestos identification.

‡ A "Version" indicated by "-x" after the Lab ID# with a value greater than 1 indicates a sample with amended data. The revision number is reflected by the value of "x".

Client: Terracon Consultants, Inc. - Emeryville
 C/O: William Frieszell
 Re: R1207238; Terra Linda High School, Limited
 2020 Hazardous Materials Survey, 320 Nova Albion

Date of Sampling: 02-17-2020
 Date of Receipt: 02-19-2020
 Date of Report: 02-20-2020

ASBESTOS PLM REPORT

Location: 19B, Concrete Slab-Tan Tinted; Building E, Exterior-Central Courtyard Area at Southwestern Side

Lab ID-Version‡: 11236913-1

Sample Layers	Asbestos Content
Brown/Gray Concrete	ND
Sample Composite Homogeneity: Moderate	

Location: 19C, Concrete Slab-Tan Tinted; Building E, Exterior-Central Courtyard Area at Southern Side

Lab ID-Version‡: 11236914-1

Sample Layers	Asbestos Content
Brown/Gray Concrete	ND
Sample Composite Homogeneity: Moderate	

Location: 20A, Concrete Slab-Red Tinted; Building E, Exterior-Central Courtyard Area at Southeastern Corner

Lab ID-Version‡: 11236915-1

Sample Layers	Asbestos Content
Gray Concrete	ND
Sample Composite Homogeneity: Good	

Location: 20B, Concrete Slab-Red Tinted; Building E, Exterior-Central Courtyard Area at Southwestern Corner

Lab ID-Version‡: 11236916-1

Sample Layers	Asbestos Content
Gray Concrete	ND
Sample Composite Homogeneity: Good	

The test report shall not be reproduced except in full, without written approval of the laboratory. The report must not be used by the client to claim product certification, approval, or endorsement by any agency of the federal government. Eurofins EMLab P&K reserves the right to dispose of all samples after a period of thirty (30) days, according to all state and federal guidelines, unless otherwise specified.

Inhomogeneous samples are separated into homogeneous subsamples and analyzed individually. ND means no fibers were detected. When detected, the minimum detection and reporting limit is less than 1% unless point counting is performed. Floor tile samples may contain large amounts of interference material and it is recommended that the sample be analyzed by gravimetric point count analysis to lower the detection limit and to aid in asbestos identification.

‡ A "Version" indicated by "-x" after the Lab ID# with a value greater than 1 indicates a sample with amended data. The revision number is reflected by the value of "x".

Client: Terracon Consultants, Inc. - Emeryville
C/O: William Frieszell
Re: R1207238; Terra Linda High School, Limited
2020 Hazardous Materials Survey, 320 Nova Albion

Date of Sampling: 02-17-2020
Date of Receipt: 02-19-2020
Date of Report: 02-20-2020

ASBESTOS PLM REPORT

Location: 20C, Concrete Slab-Red Tinted; Building E, Exterior-Central Courtyard Area at Northwestern Corner

Lab ID-Version‡: 11236917-1

Sample Layers	Asbestos Content
Gray Concrete	ND
Sample Composite Homogeneity: Good	

Location: 21A, Concrete Slab-Decorative Rock Inlay; Building E, Exterior-Central Courtyard Area, Southern Decorative Slab at Western Side

Lab ID-Version‡: 11236918-1

Sample Layers	Asbestos Content
Gray Concrete	ND
Sample Composite Homogeneity: Good	

Location: 21B, Concrete Slab-Decorative Rock Inlay; Building E, Exterior-Central Courtyard Area, Southern Decorative Slab at Eastern Side

Lab ID-Version‡: 11236919-1

Sample Layers	Asbestos Content
Gray Concrete	ND
Sample Composite Homogeneity: Good	

Location: 22A, Thick Exterior Paint-Light Blue; Building E, Exterior-Central Courtyard Area, Northern Walkway at Western Column

Lab ID-Version‡: 11236920-1

Sample Layers	Asbestos Content
Multicolored Paint Layers	ND
Sample Composite Homogeneity: Good	

The test report shall not be reproduced except in full, without written approval of the laboratory. The report must not be used by the client to claim product certification, approval, or endorsement by any agency of the federal government. Eurofins EMLab P&K reserves the right to dispose of all samples after a period of thirty (30) days, according to all state and federal guidelines, unless otherwise specified.

Inhomogeneous samples are separated into homogeneous subsamples and analyzed individually. ND means no fibers were detected. When detected, the minimum detection and reporting limit is less than 1% unless point counting is performed. Floor tile samples may contain large amounts of interference material and it is recommended that the sample be analyzed by gravimetric point count analysis to lower the detection limit and to aid in asbestos identification.

‡ A "Version" indicated by "-x" after the Lab ID# with a value greater than 1 indicates a sample with amended data. The revision number is reflected by the value of "x".

Client: Terracon Consultants, Inc. - Emeryville
 C/O: William Frieszell
 Re: R1207238; Terra Linda High School, Limited
 2020 Hazardous Materials Survey, 320 Nova Albion

Date of Sampling: 02-17-2020
 Date of Receipt: 02-19-2020
 Date of Report: 02-20-2020

ASBESTOS PLM REPORT

Location: 22B, Thick Exterior Paint-Light Blue; Building E, Exterior-Central Courtyard Area, Northern Walkway at Eastern Column

Lab ID-Version‡: 11236921-1

Sample Layers	Asbestos Content
White Sealant with Multilayered Paint	ND
Sample Composite Homogeneity: Good	

Location: 23A, Thick Exterior Paint-Beige; Building E, Exterior-Central Courtyard Area, Northern Walkway at Western Wide

Lab ID-Version‡: 11236922-1

Sample Layers	Asbestos Content
Gray Cementitious Material with Multilayered Paint	ND
Sample Composite Homogeneity: Good	

Location: 23B, Thick Exterior Paint-Beige; Building E, Exterior-Central Courtyard Area, Northern Walkway at Eastern Side

Lab ID-Version‡: 11236923-1

Sample Layers	Asbestos Content
Gray Cementitious Material with Multilayered Paint	ND
Sample Composite Homogeneity: Good	

Location: 24A, Walkway Concrete Slab Materials; Building E, Exterior-Central Courtyard Area, Northern Walkway at Western Wide

Lab ID-Version‡: 11236924-1

Sample Layers	Asbestos Content
Gray Concrete with Multilayered Paint	ND
Sample Composite Homogeneity: Good	

The test report shall not be reproduced except in full, without written approval of the laboratory. The report must not be used by the client to claim product certification, approval, or endorsement by any agency of the federal government. Eurofins EMLab P&K reserves the right to dispose of all samples after a period of thirty (30) days, according to all state and federal guidelines, unless otherwise specified.

Inhomogeneous samples are separated into homogeneous subsamples and analyzed individually. ND means no fibers were detected. When detected, the minimum detection and reporting limit is less than 1% unless point counting is performed. Floor tile samples may contain large amounts of interference material and it is recommended that the sample be analyzed by gravimetric point count analysis to lower the detection limit and to aid in asbestos identification.

‡ A "Version" indicated by "-x" after the Lab ID# with a value greater than 1 indicates a sample with amended data. The revision number is reflected by the value of "x".

Client: Terracon Consultants, Inc. - Emeryville
 C/O: William Frieszell
 Re: R1207238; Terra Linda High School, Limited
 2020 Hazardous Materials Survey, 320 Nova Albion

Date of Sampling: 02-17-2020
 Date of Receipt: 02-19-2020
 Date of Report: 02-20-2020

ASBESTOS PLM REPORT

**Location: 24B, Walkway Concrete Slab Materials; Building E, Exterior-Central
 Courtyard Area, Northern Walkway at Eastern Side**

Lab ID-Version‡: 11236925-1

Sample Layers	Asbestos Content
Gray Concrete with Multilayered Paint	ND
Sample Composite Homogeneity: Good	

**Location: 25A, Window Frame to Concrete Sealant-White; Building L, Exterior-Eastern
 Side of Building at Southern Window Assembly**

Lab ID-Version‡: 11236926-1

Sample Layers	Asbestos Content
White Sealant with Multilayered Paint	ND
Silver Coating with Multilayered Paint	3% Chrysotile
Sample Composite Homogeneity: Moderate	

**Location: 25B, Window Frame to Concrete Sealant-White; Building A, Exterior-Southern
 Side of Building at Western Window Assembly**

Lab ID-Version‡: 11236927-1

Sample Layers	Asbestos Content
White Sealant with Multilayered Paint	ND
Sample Composite Homogeneity: Good	

**Location: 26A, Storefront Frame to Glass Sealant-Grey; Building L, Exterior-Northern
 Side of Building at Main Entry Way**

Lab ID-Version‡: 11236928-1

Sample Layers	Asbestos Content
Gray Sealant	ND
Sample Composite Homogeneity: Good	

The test report shall not be reproduced except in full, without written approval of the laboratory. The report must not be used by the client to claim product certification, approval, or endorsement by any agency of the federal government. Eurofins EMLab P&K reserves the right to dispose of all samples after a period of thirty (30) days, according to all state and federal guidelines, unless otherwise specified.

Inhomogeneous samples are separated into homogeneous subsamples and analyzed individually. ND means no fibers were detected. When detected, the minimum detection and reporting limit is less than 1% unless point counting is performed. Floor tile samples may contain large amounts of interference material and it is recommended that the sample be analyzed by gravimetric point count analysis to lower the detection limit and to aid in asbestos identification.

‡ A "Version" indicated by "-x" after the Lab ID# with a value greater than 1 indicates a sample with amended data. The revision number is reflected by the value of "x".

Client: Terracon Consultants, Inc. - Emeryville
C/O: William Frieszell
Re: R1207238; Terra Linda High School, Limited
2020 Hazardous Materials Survey, 320 Nova Albion

Date of Sampling: 02-17-2020
Date of Receipt: 02-19-2020
Date of Report: 02-20-2020

ASBESTOS PLM REPORT

Location: 26B, Storefront Frame to Glass Sealant-Grey; Building M, Exterior-Southern Side of Building at Main Entry Way

Lab ID-Version‡: 11236929-1

Sample Layers	Asbestos Content
Gray/Black Sealant	ND
Sample Composite Homogeneity: Good	

Location: 27A, Window Glazing Putty-Grey; Building I, Exterior-Northern Side of Building at Northwestern Window Assembly

Lab ID-Version‡: 11236930-1

Sample Layers	Asbestos Content
Gray Window Glazing	ND
Sample Composite Homogeneity: Good	

Location: 27B, Window Glazing Putty-Grey; Building I, Exterior-Southern Side of Building at Southeastern Window Assembly

Lab ID-Version‡: 11236931-1

Sample Layers	Asbestos Content
Gray Window Glazing	ND
Sample Composite Homogeneity: Good	

Location: 27C, Window Glazing Putty-Grey; Building I, Exterior-Southern Side of Building at Southeastern Window Assembly

Lab ID-Version‡: 11236932-1

Sample Layers	Asbestos Content
Gray Window Glazing	ND
Sample Composite Homogeneity: Good	

The test report shall not be reproduced except in full, without written approval of the laboratory. The report must not be used by the client to claim product certification, approval, or endorsement by any agency of the federal government. Eurofins EMLab P&K reserves the right to dispose of all samples after a period of thirty (30) days, according to all state and federal guidelines, unless otherwise specified.

Inhomogeneous samples are separated into homogeneous subsamples and analyzed individually. ND means no fibers were detected. When detected, the minimum detection and reporting limit is less than 1% unless point counting is performed. Floor tile samples may contain large amounts of interference material and it is recommended that the sample be analyzed by gravimetric point count analysis to lower the detection limit and to aid in asbestos identification.

‡ A "Version" indicated by "-x" after the Lab ID# with a value greater than 1 indicates a sample with amended data. The revision number is reflected by the value of "x".

Client: Terracon Consultants, Inc. - Emeryville
C/O: William Frieszell
Re: R1207238; Terra Linda High School, Limited
2020 Hazardous Materials Survey, 320 Nova Albion

Date of Sampling: 02-17-2020
Date of Receipt: 02-19-2020
Date of Report: 02-20-2020

ASBESTOS PLM REPORT

Location: 28A, Window Frame to Concrete Sealant-Grey; Building A, Exterior-Southern
Side of Building at Southern Window Assembly

Lab ID-Version‡: 11236933-1

Sample Layers	Asbestos Content
Gray Sealant	2% Chrysotile
Sample Composite Homogeneity: Good	

Location: 28B, Window Frame to Concrete Sealant-Grey; Building A, Exterior-Southern
Side of Building at Southern Window Assembly

Lab ID-Version‡: 11236934-1

Sample Layers	Asbestos Content
White Sealant with Multilayered Paint	ND
Gray Sealant	2% Chrysotile
Sample Composite Homogeneity: Moderate	

Location: 29A, Storefront Frame to Window Gasket-Black; Building I, Exterior-Southern
Side of Building at Southwestern Entry Way

Lab ID-Version‡: 11236935-1

Sample Layers	Asbestos Content
Black Gasket	ND
Sample Composite Homogeneity: Good	

Location: 29B, Storefront Frame to Window Gasket-Black; Building I, Exterior-Southern
Side of Building at Southern Door Way

Lab ID-Version‡: 11236936-1

Sample Layers	Asbestos Content
Black Gasket	ND
Sample Composite Homogeneity: Good	

The test report shall not be reproduced except in full, without written approval of the laboratory. The report must not be used by the client to claim product certification, approval, or endorsement by any agency of the federal government. Eurofins EMLab P&K reserves the right to dispose of all samples after a period of thirty (30) days, according to all state and federal guidelines, unless otherwise specified.

Inhomogeneous samples are separated into homogeneous subsamples and analyzed individually. ND means no fibers were detected. When detected, the minimum detection and reporting limit is less than 1% unless point counting is performed. Floor tile samples may contain large amounts of interference material and it is recommended that the sample be analyzed by gravimetric point count analysis to lower the detection limit and to aid in asbestos identification.

‡ A "Version" indicated by "-x" after the Lab ID# with a value greater than 1 indicates a sample with amended data. The revision number is reflected by the value of "x".

Client: Terracon Consultants, Inc. - Emeryville
 C/O: William Frieszell
 Re: R1207238; Terra Linda High School, Limited
 2020 Hazardous Materials Survey, 320 Nova Albion

Date of Sampling: 02-17-2020
 Date of Receipt: 02-19-2020
 Date of Report: 02-20-2020

ASBESTOS PLM REPORT

**Location: 30A, Kiln Room Concrete Slab Materials; Building A, Exterior-Southern Kiln
 Shed Area at Southwestern Corner**

Lab ID-Version‡: 11236937-1

Sample Layers	Asbestos Content
Gray Concrete with Beige Paint	ND
Sample Composite Homogeneity: Good	

**Location: 30B, Kiln Room Concrete Slab Materials; Building A, Exterior-Southern Kiln
 Shed Area at Southeastern Corner**

Lab ID-Version‡: 11236938-1

Sample Layers	Asbestos Content
Gray Concrete with Blue Paint	ND
Sample Composite Homogeneity: Good	

**Location: 31A, Roofing Mastic-White; Building A, Exterior-Southern Kiln Shed Roof
 level at Southwestern Corner**

Lab ID-Version‡: 11236939-1

Sample Layers	Asbestos Content
White Roofing Mastic with Yellow Paint	ND
Sample Composite Homogeneity: Good	

**Location: 31B, Roofing Mastic-White; Building A, Exterior-Southern Kiln Shed Roof
 level at Southern Side**

Lab ID-Version‡: 11236940-1

Sample Layers	Asbestos Content
White Roofing Mastic with Yellow Paint	ND
Sample Composite Homogeneity: Good	

The test report shall not be reproduced except in full, without written approval of the laboratory. The report must not be used by the client to claim product certification, approval, or endorsement by any agency of the federal government. Eurofins EMLab P&K reserves the right to dispose of all samples after a period of thirty (30) days, according to all state and federal guidelines, unless otherwise specified.

Inhomogeneous samples are separated into homogeneous subsamples and analyzed individually. ND means no fibers were detected. When detected, the minimum detection and reporting limit is less than 1% unless point counting is performed. Floor tile samples may contain large amounts of interference material and it is recommended that the sample be analyzed by gravimetric point count analysis to lower the detection limit and to aid in asbestos identification.

‡ A "Version" indicated by "-x" after the Lab ID# with a value greater than 1 indicates a sample with amended data. The revision number is reflected by the value of "x".

Client: Terracon Consultants, Inc. - Emeryville
C/O: William Frieszell
Re: R1207238; Terra Linda High School, Limited
2020 Hazardous Materials Survey, 320 Nova Albion

Date of Sampling: 02-17-2020
Date of Receipt: 02-19-2020
Date of Report: 02-20-2020

ASBESTOS PLM REPORT

Location: 31C, Roofing Mastic-White; Building A, Exterior-Southern Kiln Shed Roof level at Southeastern Side

Lab ID-Version‡: 11236941-1

Sample Layers	Asbestos Content
White Roofing Mastic with Yellow Paint	ND
Sample Composite Homogeneity: Good	

Location: 32A, Concrete Slab Topping Material-Grey; Building E, Exterior-Northern 2nd Floor Walkway Area at Western Side

Lab ID-Version‡: 11236942-1

Sample Layers	Asbestos Content
Gray Coating	ND
Gray Concrete	ND
Sample Composite Homogeneity: Moderate	

Location: 32B, Concrete Slab Topping Material-Grey; Building E, Exterior-Northern 2nd Floor Walkway Area at Approximate Center

Lab ID-Version‡: 11236943-1

Sample Layers	Asbestos Content
Gray Coating	ND
Gray Concrete	ND
Sample Composite Homogeneity: Moderate	

Location: 32C, Concrete Slab Topping Material-Grey; Building E, Exterior-Northern 2nd Floor Walkway Area at Eastern Side

Lab ID-Version‡: 11236944-1

Sample Layers	Asbestos Content
Gray Coating	ND
Gray Concrete	ND
Sample Composite Homogeneity: Moderate	

The test report shall not be reproduced except in full, without written approval of the laboratory. The report must not be used by the client to claim product certification, approval, or endorsement by any agency of the federal government. Eurofins EMLab P&K reserves the right to dispose of all samples after a period of thirty (30) days, according to all state and federal guidelines, unless otherwise specified.

Inhomogeneous samples are separated into homogeneous subsamples and analyzed individually. ND means no fibers were detected. When detected, the minimum detection and reporting limit is less than 1% unless point counting is performed. Floor tile samples may contain large amounts of interference material and it is recommended that the sample be analyzed by gravimetric point count analysis to lower the detection limit and to aid in asbestos identification.

‡ A "Version" indicated by "-x" after the Lab ID# with a value greater than 1 indicates a sample with amended data. The revision number is reflected by the value of "x".

Client: Terracon Consultants, Inc. - Emeryville
C/O: William Frieszell
Re: R1207238; Terra Linda High School, Limited
2020 Hazardous Materials Survey, 320 Nova Albion

Date of Sampling: 02-17-2020
Date of Receipt: 02-19-2020
Date of Report: 02-20-2020

ASBESTOS PLM REPORT

Location: 33A, Concrete Parge Coating-White/Yellow; Gymnasium Building, Interior-Main Open Gymnasium Area at Southwestern Entry Way

Lab ID-Version‡: 11236945-1

Sample Layers	Asbestos Content
White Coating with Multilayered Paint	ND
Sample Composite Homogeneity: Good	

Location: 33B, Concrete Parge Coating-White/Yellow; Gymnasium Building, Interior-Main Open Gymnasium Area at Eastern Wall

Lab ID-Version‡: 11236946-1

Sample Layers	Asbestos Content
Multicolored Paint Layers	ND
Sample Composite Homogeneity: Good	

Location: 33C, Concrete Parge Coating-White/Yellow; Gymnasium Building, Interior-Main Open Gymnasium Area at Southern Wall

Lab ID-Version‡: 11236947-1

Sample Layers	Asbestos Content
Multicolored Paint Layers	ND
Sample Composite Homogeneity: Good	

Location: 34A, Perimeter Wall System-Concrete; Gymnasium Building, Interior-Main Open Gymnasium Area at Southwestern Entry Way

Lab ID-Version‡: 11236948-1

Sample Layers	Asbestos Content
Gray Concrete with Multilayered Paint	ND
Sample Composite Homogeneity: Good	

The test report shall not be reproduced except in full, without written approval of the laboratory. The report must not be used by the client to claim product certification, approval, or endorsement by any agency of the federal government. Eurofins EMLab P&K reserves the right to dispose of all samples after a period of thirty (30) days, according to all state and federal guidelines, unless otherwise specified.

Inhomogeneous samples are separated into homogeneous subsamples and analyzed individually. ND means no fibers were detected. When detected, the minimum detection and reporting limit is less than 1% unless point counting is performed. Floor tile samples may contain large amounts of interference material and it is recommended that the sample be analyzed by gravimetric point count analysis to lower the detection limit and to aid in asbestos identification.

‡ A "Version" indicated by "-x" after the Lab ID# with a value greater than 1 indicates a sample with amended data. The revision number is reflected by the value of "x".

Client: Terracon Consultants, Inc. - Emeryville
 C/O: William Frieszell
 Re: R1207238; Terra Linda High School, Limited
 2020 Hazardous Materials Survey, 320 Nova Albion

Date of Sampling: 02-17-2020
 Date of Receipt: 02-19-2020
 Date of Report: 02-20-2020

ASBESTOS PLM REPORT

**Location: 34B, Perimeter Wall System-Concrete;Gymnasium Building, Interior-Main
 Open Gymnasium Area at Southern Wall**

Lab ID-Version‡: 11236949-1

Sample Layers	Asbestos Content
Gray Concrete	ND
Sample Composite Homogeneity:	Good

**Location: 34C, Perimeter Wall System-Concrete;Gymnasium Building, Interior-Main
 Open Gymnasium Area at Northern Wall Rough**

Lab ID-Version‡: 11236950-1

Sample Layers	Asbestos Content
White Compound with Multilayered Paint	ND
Gray Concrete	ND
Sample Composite Homogeneity:	Moderate

**Location: 35A, Ceiling Tile -2'x4' White Lay-in System, Rough Textured;Gymnasium
 Building, Interior-Northern Gym Entry Lobby Area at Western Side**

Lab ID-Version‡: 11236951-1

Sample Layers	Asbestos Content
Light Gray Ceiling Tile with White Surface	ND
Composite Non-Asbestos Content:	75% Glass Fibers < 1% Cellulose
Sample Composite Homogeneity:	Good

**Location: 35B, Ceiling Tile -2'x4' White Lay-in System, Rough Textured;Gymnasium
 Building, Interior-Northern Gym Entry Lobby Area at Eastern Side**

Lab ID-Version‡: 11236952-1

Sample Layers	Asbestos Content
Light Gray Ceiling Tile with White Surface	ND
Composite Non-Asbestos Content:	75% Glass Fibers < 1% Cellulose
Sample Composite Homogeneity:	Good

The test report shall not be reproduced except in full, without written approval of the laboratory. The report must not be used by the client to claim product certification, approval, or endorsement by any agency of the federal government. Eurofins EMLab P&K reserves the right to dispose of all samples after a period of thirty (30) days, according to all state and federal guidelines, unless otherwise specified.

Inhomogeneous samples are separated into homogeneous subsamples and analyzed individually. ND means no fibers were detected. When detected, the minimum detection and reporting limit is less than 1% unless point counting is performed. Floor tile samples may contain large amounts of interference material and it is recommended that the sample be analyzed by gravimetric point count analysis to lower the detection limit and to aid in asbestos identification.

‡ A "Version" indicated by "-x" after the Lab ID# with a value greater than 1 indicates a sample with amended data. The revision number is reflected by the value of "x".

1466 66th Street, Emeryville, California

002358642

ACM BULK SAMPLE DATA SHEET

* PLM Analysis

Page 1 of 8

— Stop Analysis at First Positive

☒ Analyze All Samples

— Point Count Analysis (400-point)

<input checked="" type="checkbox"/>	PM - W. Frieszell wfrieszell@terracon.com	PM - K. Schroeter Karin@rgacnv.com	PM - K. Pilgrim Ken@rgacnv.com
	PM - T. Kattchee Ted@rgacnv.com	PM - S. Steiner steff@rgacnv.com	PM - W. Frieszell wfrieszell@terracon.com

Project Name/Address	Terra Linda High School, Limited 2020 Hazardous Materials Survey, 320 Nova Albion Way, San Rafael, CA						
Terracon Project Number	R1207238	Sampled By	W. Frieszell/ W. Renner		Sampling Date	February 17, 2020	
Laboratory	EMLab	<input checked="" type="checkbox"/> Other	Turn Around Time	24 Hrs	<input checked="" type="checkbox"/> Other (Specify)		

FAX OR E-MAIL REPORT TO: SEE ABOVE PROJECT MANAGER (PM)

HM# 1	Material Description: Interior Wall Systems - Drywall and Joint Compound		
Sample ID	Sample Location & Material Location	Quantity:	
1 A	Building A, 2 nd Floor Interior - Classroom 58 Area at Southern Wall		
1 B	Building A, 2 nd Floor Interior - Classroom 58 Area at Northeastern Corner		
1 C	Building A, 2 nd Floor Interior - Classroom 58 Area at Southeastern Corner		
Material Location:			
HM# 2	Material Description: Ceiling Tile - 2'x2' White Lay-in System, Rough Textured		
Sample ID	Sample Location & Material Location	Quantity:	
2 A	Building A, 2 nd Floor Interior - Classroom 58 Area at Southern Side		
2 B	Building A, 2 nd Floor Interior - Classroom 58 Area at Northeastern Corner		
2 C	Building A, 2 nd Floor Interior - Classroom 58 Area at Southeastern Corner		
Material Location:			
HM# 3	Material Description: Floor Tile System - 12" White with Tan Flecks and Yellow Mastic		
Sample ID	Sample Locations	Quantity:	
3 A	Building A, 2 nd Floor Interior - Classroom 58 Area at Northeastern Sink		
3 B	Building A, 2 nd Floor Interior - Classroom 58 Area, Southeastern Store Room at Northern Side		
3 C	Building A, 2 nd Floor Interior - Classroom 58 Area at Western Side		
Material Location:			
HM# 4	Material Description: Interior Window Frame Sealant - White		
Sample ID	Sample Location & Material Location	Quantity:	
4 A	Building A, 2 nd Floor Interior - Classroom 58 Area at Northwestern Corner		
4 B	Building A, 2 nd Floor Interior - Classroom 58 Area at Northeastern Corner		
C			
Material Location:			
HM# 5	Material Description: Cove Base Adhesive - White on 4" Black Cove		
Sample ID	Sample Location & Material Location	Quantity:	
5 A	Building A, 2 nd Floor Interior - Classroom 58 Area at Northeastern Sink		
5 B	Building A, 2 nd Floor Interior - Classroom 58 Area, Southeastern Store Room at Northern Side		
C			
Material Location:			

NAME:		SIGNATURE:		COMPANY:		DATE:	
Relinquished By:	William Frieszell			Terracon Consultants		February 17, 2020	
Received By:						2/19/2020	
Relinquished By:							
Received By:							

1466 66th Street, Emeryville, California

002358642

ACM BULK SAMPLE DATA SHEET

Page 2 of 8

* PLM Analysis

— Stop Analysis at First Positive

☒ Analyze All Samples

— Point Count Analysis (400-point)

<input checked="" type="checkbox"/>	PM - W. Frieszell wmfrieszell@terracon.com	PM - K. Schroeter Karin@rgacnv.com	PM - K. Pilgrim Ken@rgacnv.com
	PM - T. Kattchee Ted@rgacnv.com	PM - S. Steiner steff@rgacnv.com	PM - W. Frieszell wmfrieszell@terracon.com

Project Name/Address	Terra Linda High School, Limited 2020 Hazardous Materials Survey, 320 Nova Albion Way, San Rafael, CA						
Terracon Project Number	R1207238	Sampled By	W. Frieszell / W. Renner		Sampling Date	February 17, 2020	
Laboratory	EMLab	<input checked="" type="checkbox"/> Other	Turn Around Time		24 Hrs	<input checked="" type="checkbox"/> Other (Specify)	

FAX OR E-MAIL REPORT TO: SEE ABOVE PROJECT MANAGER (PM)

HM#	6	Material Description: Sink Undercoating - Grey	
Sample ID	Sample Location & Material Location		Quantity:
6	A	Building A, 2 nd Floor Interior - Classroom 58 Area at Northeastern Sink	
6	B	Building A, 2 nd Floor Interior - Classroom 58 Area at Northwestern Sink	
6	C	Building A, 2 nd Floor Interior - Classroom 58 Area at Southwestern Sink	
Material Location:			
HM#	7	Material Description: Ceramic Wall Tile System - 4" Tan/White Tiles with Grout and Mastic	
Sample ID	Sample Location & Material Location		Quantity:
7	A	Building C, 2 nd Floor Interior - Women's Restroom Area at Western Damaged Area	
7	B	Building C, 2 nd Floor Interior - Women's Restroom Area at Western Damaged Area	
	C		
Material Location:			
HM#	8	Material Description: Interior Wall Systems - White Plaster with Beige Coating	
Sample ID	Sample Locations		Quantity:
8	A	Building C, 2 nd Floor Interior - Women's Restroom Janitor Closet at Southeastern Corner	
8	B	Building C, 2 nd Floor Interior - Men's Restroom Area at Northwestern Corner	
8	C	Building C, 1 st Floor Interior - Women's Restroom Janitor Closet at Southern Wall	
Material Location:			
HM#	9	Material Description: Cove Base Adhesive - Brown on 4" Blue Cove	
Sample ID	Sample Location & Material Location		Quantity:
9	A	Building C, 2 nd Floor Interior - Men's Restroom Area at Northwestern Corner	
	B		
	C		
Material Location:			
HM#	10	Material Description: Ceramic Floor Tile System - 2" Grey/White Tiles with Grout and Mortar	
Sample ID	Sample Location & Material Location		Quantity:
10	A	Building C, 2 nd Floor Interior - Women's Restroom Janitor Closet at Entry Way	
10	B	Building C, 2 nd Floor Interior - Women's Restroom Janitor Closet at Entry Way	
10	C	Building C, 1 st Floor Interior - Women's Restroom Janitor Closet at Entry Way	
Material Location:			

	NAME:	SIGNATURE:	COMPANY:	DATE:
Relinquished By:	William Frieszell	<i>William Frieszell</i>	Terracon Consultants	February 17, 2020
Received By:			<i>MOHJ Ed Ex 930</i>	2/19/2020
Relinquished By:				
Received By:				

1466 66th Street, Emeryville, California

002358642

ACM BULK SAMPLE DATA SHEET

* PLM Analysis

Page 3 of 8☐ Stop Analysis at First Positive☒ Analyze All Samples☐ Point Count Analysis (400-point)

<input checked="" type="checkbox"/>	PM - W. Frieszell wmfrieszell@terracon.com	PM - K. Schroeter Karin@rgaenv.com	PM - K. Pilgrim Ken@rgaenv.com
	PM - T. Kattchee Tedd@rgaenv.com	PM - S. Steiner steff@rgaenv.com	PM - W. Frieszell wmfrieszell@terracon.com

Project Name/Address	Terra Linda High School, Limited 2020 Hazardous Materials Survey, 320 Nova Albion Way, San Rafael, CA						
Terracon Project Number	R1207238	Sampled By	W. Frieszell/ W. Renner		Sampling Date	February 17, 2020	
Laboratory	EMLab	<input checked="" type="checkbox"/> Other	Turn Around Time		24 Hrs	<input checked="" type="checkbox"/> Other (Specify)	

FAX OR E-MAIL REPORT TO: SEE ABOVE PROJECT MANAGER (PM)

HM# 11	Material Description: Floor Tile System - 12" White with Blue Flecks over Tan Tile with Black Mastic	
Sample ID	Sample Location & Material Location	Quantity:
11 A	Building C, 2 nd Floor Interior - Men's Restroom Area at Western Entry Way	
11 B		
C		
Material Location:		
HM# 12	Material Description: Wainscot Adhesive on White FRP Paneling	
Sample ID	Sample Location & Material Location	Quantity:
A	*****INACCESSIBLE - ASSUMED*****	
B		
C		
Material Location:	Building C, 2 nd Floor Women's Restroom	
HM# 13	Material Description: Ceramic Wall Tile System - 4" Tan Painted Tile with Grout and Adhesive	
Sample ID	Sample Locations	Quantity:
A	*****INACCESSIBLE - ASSUMED*****	
B		
C		
Material Location:	Building C, Common Corridor Walls	
HM# 14	Material Description: Cove Base Adhesive - Brown on 4" Black Cove	
Sample ID	Sample Location & Material Location	Quantity:
14 A	Building C, 2 nd Floor Interior - Women's Restroom Janitor Closet at Southeastern Corner	
14 B	Building C, 2 nd Floor Interior - Women's Restroom Janitor Closet at Southeastern Corner	
14 C	Building C, 1 st Floor Interior - Women's Restroom Janitor Closet at Eastern Wall	
Material Location:		
HM# 15	Material Description: Floor Tile System - 12" White with Blue Flecks and Black Mastic	
Sample ID	Sample Location & Material Location	Quantity:
15 A	Building C, 1 st Floor Interior - Men's Restroom Area at Southern Side	
B		
C		
Material Location:		

NAME:		SIGNATURE:		COMPANY:		DATE:	
Relinquished By:	William Frieszell			Terracon Consultants		February 17, 2020	
Received By:						2/19/2020	
Relinquished By:							
Received By:							

1466 66th Street, Emeryville, California

002358642

ACM BULK SAMPLE DATA SHEET

* PLM Analysis

Page 4 of 8☐ Stop Analysis at First Positive☒ Analyze All Samples☐ Point Count Analysis (400-point)

<input checked="" type="checkbox"/>	PM - W. Frieszell wfrieszell@terracon.com	PM - K. Schroeter Karin@rgacnv.com	Ken@rgacnv.com
	PM - T. Katchee Ted@rgacnv.com	PM - S. Steiner steff@rgacnv.com	PM - W. Frieszell wfrieszell@terracon.com

Project Name/Address	Terra Linda High School, Limited 2020 Hazardous Materials Survey, 320 Nova Albion Way, San Rafael, CA					
Terracon Project Number	R1207238	Sampled By	W. Frieszell/ W. Renner	Sampling Date	February 17, 2020	
Laboratory	EMLab	<input checked="" type="checkbox"/> Other	Turn Around Time	24 Hrs	<input checked="" type="checkbox"/> Other (Specify)	

FAX OR E-MAIL REPORT TO: SEE ABOVE PROJECT MANAGER (PM)

HM#	16	Material Description: Storefront Frame to Concrete Sealant - Grey	
Sample ID		Sample Location & Material Location	Quantity:
16 A		Building C, Exterior - Northern Side of Building at Main Entry Way	
16 B		Building L, Exterior - Northern Side of Building at Main Entry Way	
16 C		Building M, Exterior - Southern Side of Building at Main Entry Way	
Material Location:			
HM#	17	Material Description: Window Putty System - White with Grey Sealant	
Sample ID		Sample Location & Material Location	Quantity:
17 A		Building C, Exterior - Eastern Side of Building at Southeastern Window Assembly	
17 B		Building M, Exterior - Western Side of Building at Northern Window Assembly	
17 C		Building M, Exterior - Western Side of Building at Southern Window Assembly	
Material Location:			
HM#	18	Material Description: Rubberized Window Frame to Concrete Sealant - Black	
Sample ID		Sample Locations	Quantity:
18 A		Building C, Exterior - Eastern Side of Building at Southeastern Window Assembly	
18 B		Building M, Exterior - Western Side of Building at Northern Window Assembly	
18 C		Building M, Exterior - Western Side of Building at Southern Window Assembly	
Material Location:			
HM#	19	Material Description: Concrete Slab - Tan Tinted	
Sample ID		Sample Location & Material Location	Quantity:
19 A		Building E, Exterior - Central Courtyard Area at Approximate Center	
19 B		Building E, Exterior - Central Courtyard Area at Southwestern Side	
19 C		Building E, Exterior - Central Courtyard Area at Southern Side	
Material Location:			

NAME:		SIGNATURE:		COMPANY:		DATE:	
Relinquished By:	William Frieszell	<i>William Frieszell</i>		Terracon Consultants		February 17, 2020	
Received By:				<i>Michael F. Edwards</i>		2/19/2020	
Relinquished By:							
Received By:							

1466 66th Street, Emeryville, California

002358642

ACM BULK SAMPLE DATA SHEET

* PLM Analysis

Page 5 of 8☐ Stop Analysis at First Positive☒ Analyze All Samples☐ Point Count Analysis (400-point)

<input checked="" type="checkbox"/> PM - W. Frieszell wfrieszell@terracon.com	PM - K. Schroeter Karin@rgaenv.com	PM - K. Pilgrim Ken@rgaenv.com
PM - T. Kattchee Todd@rgaenv.com	PM - S. Steiner steff@rgaenv.com	PM - W. Frieszell wfrieszell@terracon.com

Project Name/Address	Terra Linda High School, Limited 2020 Hazardous Materials Survey, 320 Nova Albion Way, San Rafael, CA					
Terracon Project Number	R1207238	Sampled By	W. Frieszell / W. Renner	Sampling Date	February 17, 2020	
Laboratory	EMLab	<input checked="" type="checkbox"/> Other	Turn Around Time	24 Hrs	<input checked="" type="checkbox"/> Other (Specify)	

***FAX OR E-MAIL REPORT TO: SEE ABOVE PROJECT MANAGER (PM) ***

HM#	20	Material Description: Concrete Slab - Red Tinted	
Sample ID		Sample Location & Material Location	Quantity:
20	A	Building E, Exterior - Central Courtyard Area at Southeastern Corner	
20	B	Building E, Exterior - Central Courtyard Area at Southwestern Corner	
20	C	Building E, Exterior - Central Courtyard Area at Northwestern Corner	
Material Location:			
HM#	21	Material Description: Concrete Slab - Decorative Rock Inlay	
Sample ID		Sample Location & Material Location	Quantity:
21	A	Building E, Exterior - Central Courtyard Area, Southern Decorative Slab at Western Side	
21	B	Building E, Exterior - Central Courtyard Area, Southern Decorative Slab at Eastern Side	
	C		
Material Location:			
HM#	22	Material Description: Thick Exterior Paint - Light Blue	
Sample ID		Sample Locations	Quantity:
22	A	Building E, Exterior - Central Courtyard Area, Northern Walkway at Western Column	
22	B	Building E, Exterior - Central Courtyard Area, Northern Walkway at Eastern Column	
	C		
Material Location:			
HM#	23	Material Description: Thick Exterior Paint - Beige	
Sample ID		Sample Location & Material Location	Quantity:
23	A	Building E, Exterior - Central Courtyard Area, Northern Walkway at Western Wide	
23	B	Building E, Exterior - Central Courtyard Area, Northern Walkway at Eastern Side	
	C		
Material Location:			
HM#	24	Material Description: Walkway Concrete Slab Materials	
Sample ID		Sample Location & Material Location	Quantity:
24	A	Building E, Exterior - Central Courtyard Area, Northern Walkway at Western Wide	
24	B	Building E, Exterior - Central Courtyard Area, Northern Walkway at Eastern Side	
	C		
Material Location:			

Relinquished By:	NAME: William Frieszell	SIGNATURE: <i>William Frieszell</i>	COMPANY: Terracon Consultants	DATE: February 17, 2020
Received By:				
Relinquished By:				
Received By:				

1466 66th Street, Emeryville, California

002358642

ACM BULK SAMPLE DATA SHEET

* PLM Analysis

Page 6 of 8

— Stop Analysis at First Positive

☒ Analyze All Samples

— Point Count Analysis (400-point)

<input checked="" type="checkbox"/>	PM - W. Frieszell wmfrieszell@terracon.com	PM - K. Schroeter Karin@rgacnv.com	PM - K. Pilgrim Ken@rgacnv.com
	PM - T. Katchee Tedd@rgacnv.com	PM - S. Steiner steff@rgacnv.com	PM - W. Frieszell wmfrieszell@terracon.com

Project Name/Address	Terra Linda High School, Limited 2020 Hazardous Materials Survey, 320 Nova Albion Way, San Rafael, CA						
Terracon Project Number	R1207238	Sampled By	W. Frieszell/ W. Renner		Sampling Date	February 17, 2020	
Laboratory	EMLab	<input checked="" type="checkbox"/> Other	Turn Around Time	24 Hrs	<input checked="" type="checkbox"/> Other (Specify)		

FAX OR E-MAIL REPORT TO: SEE ABOVE PROJECT MANAGER (PM)

HM# 25	Material Description: Window Frame to Concrete Sealant - White	
Sample ID	Sample Location & Material Location	Quantity:
25 A	Building L, Exterior - Eastern Side of Building at Southern Window Assembly	
25 B	Building A, Exterior - Southern Side of Building at Western Window Assembly	
C		
Material Location:		
HM# 26	Material Description: Storefront Frame to Glass Sealant - Grey	
Sample ID	Sample Location & Material Location	Quantity:
26 A	Building L, Exterior - Northern Side of Building at Main Entry Way	
26 B	Building M, Exterior - Southern Side of Building at Main Entry Way	
C		
Material Location:		
HM# 27	Material Description: Window Glazing Putty - Grey	
Sample ID	Sample Locations	Quantity:
27 A	Building I, Exterior - Northern Side of Building at Northwestern Window Assembly	
27 B	Building I, Exterior - Southern Side of Building at Southeastern Window Assembly	
27 C	Building A, Exterior - Southern Side of Building at Southeastern Window Assembly	
Material Location:		
HM# 28	Material Description: Window Frame to Concrete Sealant - Grey	
Sample ID	Sample Location & Material Location	Quantity:
28 A	Building A, Exterior - Southern Side of Building at Southern Window Assembly	
28 B	Building A, Exterior - Southern Side of Building at Southern Window Assembly	
C		
Material Location:		
HM# 29	Material Description: Storefront Frame to Window Gasket - Black	
Sample ID	Sample Location & Material Location	Quantity:
29 A	Building I, Exterior - Southern Side of Building at Southwestern Entry Way	
29 B	Building E, Exterior - Southern Side of Building at Southern Door Way	
C		
Material Location:		

NAME:	SIGNATURE:	COMPANY:	DATE:
Relinquished By:	William Frieszell	<i>William Frieszell</i>	Terracon Consultants
Received By:			February 17, 2020
Relinquished By:			
Received By:			

1466 66th Street, Emeryville, California

002358642

ACM BULK SAMPLE DATA SHEET

PLM Analysis

Page 7 of 8

— Stop Analysis at First Positive

☒ Analyze All Samples

— Point Count Analysis (400-point)

<input checked="" type="checkbox"/>	PM - W. Frieszell wfrieszell@terracon.com	PM - K. Schroeter Karin@rgaenv.com	PM - K. Pilgrim Kcn@rgaenv.com
	PM - T. Kattchee Tedd@rgaenv.com	PM - S. Steiner steff@rgaenv.com	PM - W. Frieszell wfrieszell@terracon.com

Project Name/Address	Terra Linda High School, Limited 2020 Hazardous Materials Survey, 320 Nova Albion Way, San Rafael, CA						
Terracon Project Number	R1207238	Sampled By	W. Frieszell/ W. Renner		Sampling Date	February 17, 2020	
Laboratory	EMLab	<input checked="" type="checkbox"/> Other	Turn Around Time		24 Hrs	<input checked="" type="checkbox"/> Other (Specify)	

FAX OR E-MAIL REPORT TO: SEE ABOVE PROJECT MANAGER (PM)

HM#	30	Material Description: Kiln Room Concrete Slab Materials	
Sample ID		Sample Location & Material Location	Quantity:
	30 A	Building A, Exterior - Southern Kiln Shed Area at Southwestern Corner	
	30 B	Building A, Exterior - Southern Kiln Shed Area at Southeastern Corner	
	C		
Material Location:			
HM#	31	Material Description: Roofing Mastic - White	
Sample ID		Sample Location & Material Location	Quantity:
	31 A	Building A, Exterior - Southern Kiln Shed Roof Level at Southwestern Corner	
	31 B	Building A, Exterior - Southern Kiln Shed Roof Level at Southern Side	
	31 C	Building A, Exterior - Southern Kiln Shed Roof Level at Southeastern Corner	
Material Location:			
HM#	32	Material Description: Concrete Slab Topping Material - Grey	
Sample ID		Sample Locations	Quantity:
	32 A	Building E, Exterior - Northern 2 nd Floor Walkway Area at Western Side	
	32 B	Building E, Exterior - Northern 2 nd Floor Walkway Area at Approximate Center	
	32 C	Building E, Exterior - Northern 2 nd Floor Walkway Area at Eastern Side	
Material Location:			
HM#	33	Material Description: Concrete Parge Coating - White/Yellow	
Sample ID		Sample Location & Material Location	Quantity:
	33 A	Gymnasium Building, Interior - Main Open Gymnasium Area at Southwestern Entry Way	
	33 B	Gymnasium Building, Interior - Main Open Gymnasium Area at Eastern Wall	
	33 C	Gymnasium Building, Interior - Main Open Gymnasium Area at Southern Wall	
Material Location:			
HM#	34	Material Description: Perimeter Wall System - Concrete	
Sample ID		Sample Location & Material Location	Quantity:
	34 A	Gymnasium Building, Interior - Main Open Gymnasium Area at Southwestern Entry Way	
	34 B	Gymnasium Building, Interior - Main Open Gymnasium Area at Southern Wall	
	34 C	Gymnasium Building, Interior - Main Open Gymnasium Area at Northern Wall (Rough)	
Material Location:			

Relinquished By:	NAME: William Frieszell	SIGNATURE: <i>William Frieszell</i>	COMPANY: Terracon Consultants	DATE: February 17, 2020
Received By:			<i>WKS</i>	<i>2/19/2020</i>
Relinquished By:				
Received By:				

1466 66th Street, Emeryville, California

002358642

ACM BULK SAMPLE DATA SHEET

* PLM Analysis

Page 8 of 8☐ Stop Analysis at First Positive☒ Analyze All Samples☐ Point Count Analysis (400-point)

<input checked="" type="checkbox"/>	PM - W. Frieszell wmfrieszell@terracon.com	PM - K. Schroeter Karin@rgacnv.com	PM - K. Pilgum Ken@rgacnv.com
	PM - T. Kattchee Ted@rgacnv.com	PM - S. Steiner steff@rgacnv.com	PM - W. Frieszell wmfrieszell@terracon.com

Project Name/Address	Terra Linda High School, Limited 2020 Hazardous Materials Survey, 320 Nova Albion Way, San Rafael, CA					
Terracon Project Number	R1207238	Sampled By	W. Frieszell/ W. Renner	Sampling Date	February 17, 2020	
Laboratory	EMLab	<input checked="" type="checkbox"/> Other	Turn Around Time	24 Hrs	<input checked="" type="checkbox"/> Other (Specify)	

FAX OR E-MAIL REPORT TO: SEE ABOVE PROJECT MANAGER (PM)

HM#	35	Material Description:	Ceiling Tile - 2'x4' White Lay-in System, Rough Textured
Sample ID		Sample Location & Material Location	Quantity:
	35 A	Gymnasium Building, Interior - Northern Gym Entry Lobby Area at Western Side	
	35 B	Gymnasium Building, Interior - Northern Gym Entry Lobby Area at Eastern Side	
	C		
Material Location:			
HM#		Material Description:	
Sample ID		Sample Location & Material Location	Quantity:
	A		
	B		
	C		
Material Location:			
HM#		Material Description:	
Sample ID		Sample Locations	Quantity:
	A		
	B		
	C		
Material Location:			
HM#		Material Description:	
Sample ID		Sample Location & Material Location	Quantity:
	A		
	B		
	C		
Material Location:			
HM#		Material Description:	
Sample ID		Sample Location & Material Location	Quantity:
	A		
	B		
	C		
Material Location:			

Relinquished By:	NAME: William Frieszell	SIGNATURE: <i>William Frieszell</i>	COMPANY: Terracon Consultants	DATE: February 17, 2020
Received By:			<i>W. Frieszell</i>	
Relinquished By:				
Received By:				

APPENDIX B

LEAD ANALYTICAL LABORATORY DATA



Report for:

William Frieszell
Terracon Consultants, Inc. - Emeryville
1466 66th Street
Emeryville, CA 94608

Regarding: Project: R1207238; Terra Linda High School, Limited 2020 Hazardous Materials Survey, 320 Nova Alb
EML ID: 2359035

Approved by:

Dates of Analysis:
Lead - Flame AA: 02-20-2020



Technical Manager
Andrew Ikeda

Service SOPs: Lead - Flame AA (EM-BC-S-8443)
AIHA-LAP, LLC accredited service, Lab ID #178697

All samples were received in acceptable condition unless noted in the Report Comments portion in the body of the report. Due to the nature of the analyses performed, field blank correction of results is not applied. The results relate only to the samples as received. Sample size, as it relates to Wipe samples only, is supplied by the client.

Eurofins EMLab P&K ("the Company") shall have no liability to the client or the client's customer with respect to decisions or recommendations made, actions taken or courses of conduct implemented by either the client or the client's customer as a result of or based upon the Test Results. In no event shall the Company be liable to the client with respect to the Test Results except for the Company's own willful misconduct or gross negligence nor shall the Company be liable for incidental or consequential damages or lost profits or revenues to the fullest extent such liability may be disclaimed by law, even if the Company has been advised of the possibility of such damages, lost profits or lost revenues. In no event shall the Company's liability with respect to the Test Results exceed the amount paid to the Company by the client therefor.

Eurofins EMLab P&K's LabServe® reporting system includes automated fail-safes to ensure that all AIHA-LAP, LLC quality requirements are met and notifications are added to reports when any quality steps remain pending.

Client: Terracon Consultants, Inc. - Emeryville
C/O: William Frieszell
Re: R1207238; Terra Linda High School, Limited
2020 Hazardous Materials Survey, 320 Nova Alb

Date of Sampling: 02-17-2020
Date of Receipt: 02-19-2020
Date of Report: 02-20-2020

LEAD: FLAME ATOMIC ABSORPTION SPECTROMETRY

Location:	Pb-01: White 4" Ceramic Wall Tile System	Pb-02: Grey 2" Ceramic Floor Tile System	Pb-03: White Plaster Wall System	Pb-04: Grey Sealant Compound Storefront Frame Sealant
Comments (see below)	None	None	None	None
Lab ID-Version‡:	11238796-1	11238797-1	11238798-1	11238799-1
Analysis Date:	02/20/2020	02/20/2020	02/20/2020	02/20/2020
Sample type	Bulk sample	Bulk sample	Paint Chip sample	Bulk sample
Method*	NIOSH 7082 & EPA 7000B modified	NIOSH 7082 & EPA 7000B modified	NIOSH 7082 & EPA 7000B modified	NIOSH 7082 & EPA 7000B modified
† Method Reporting Limit	39 ppm	40 ppm	40 ppm	39 ppm
Sample size	0.2541 grams	0.2527 grams	0.2526 grams	0.2578 grams
§ Total Lead Result	900 ppm	< 40 ppm	99 ppm	< 39 ppm

Comments:

Sample results have not been corrected for blank values.

Bulk samples are not covered under the AIHA-LAP, LLC service accreditation.

Wipe samples must meet ASTM E1792 criteria. Method Reporting Limits may not be valid for non-ASTM E1792 wipe samples.

*Sample preparation and analytical methods are based upon NIOSH 7082 and EPA 7000B.

† The Method Reporting Limit is the minimum concentration of Lead that the laboratory can confidently detect in the sample.

§ Total Lead Result has been rounded to two significant figures to reflect analytical precision.

‡ A "Version" indicated by -"x" after the Lab ID# with a value greater than 1 indicates a sample with amended data. The revision number is reflected by the value of "x".

Client: Terracon Consultants, Inc. - Emeryville
 C/O: William Frieszell
 Re: R1207238; Terra Linda High School, Limited
 2020 Hazardous Materials Survey, 320 Nova Alb

Date of Sampling: 02-17-2020
 Date of Receipt: 02-19-2020
 Date of Report: 02-20-2020

LEAD: FLAME ATOMIC ABSORPTION SPECTROMETRY

Location:	Pb-05: White Putty Window Glazing System	Pb-06: Light Blue Concrete Column	Pb-07: Beige Concrete Slab	Pb-08: Grey Putty Window Glazing
Comments (see below)	None	None	None	None
Lab ID-Version‡:	11238800-1	11238801-1	11238802-1	11238803-1
Analysis Date:	02/20/2020	02/20/2020	02/20/2020	02/20/2020
Sample type	Bulk sample	Paint Chip sample	Paint Chip sample	Bulk sample
Method*	NIOSH 7082 & EPA 7000B modified	NIOSH 7082 & EPA 7000B modified	NIOSH 7082 & EPA 7000B modified	NIOSH 7082 & EPA 7000B modified
† Method Reporting Limit	40 ppm	39 ppm	40 ppm	39 ppm
Sample size	0.2529 grams	0.2542 grams	0.2506 grams	0.2583 grams
§Total Lead Result	42 ppm	2000 ppm	3500 ppm	370 ppm

Comments:

Sample results have not been corrected for blank values.

Bulk samples are not covered under the AIHA-LAP, LLC service accreditation.

Wipe samples must meet ASTM E1792 criteria. Method Reporting Limits may not be valid for non-ASTM E1792 wipe samples.

*Sample preparation and analytical methods are based upon NIOSH 7082 and EPA 7000B.

† The Method Reporting Limit is the minimum concentration of Lead that the laboratory can confidently detect in the sample.

§ Total Lead Result has been rounded to two significant figures to reflect analytical precision.

‡ A "Version" indicated by -"x" after the Lab ID# with a value greater than 1 indicates a sample with amended data. The revision number is reflected by the value of "x".

Client: Terracon Consultants, Inc. - Emeryville
C/O: William Frieszell
Re: R1207238; Terra Linda High School, Limited
2020 Hazardous Materials Survery, 320 Nova Alb

Date of Sampling: 02-17-2020
Date of Receipt: 02-19-2020
Date of Report: 02-20-2020

LEAD: FLAME ATOMIC ABSORPTION SPECTROMETRY

Location:	Pb-09: Blue Corrugated Metal Wall System	Pb-10: Clear Glazing Wood Gym Flooring System	Pb-11: White Concrete Perimeter Wall System
Comments (see below)	None	None	None
Lab ID-Version‡:	11238804-1	11238805-1	11238806-1
Analysis Date:	02/20/2020	02/20/2020	02/20/2020
Sample type	Paint Chip sample	Paint Chip sample	Paint Chip sample
Method*	NIOSH 7082 & EPA 7000B modified	NIOSH 7082 & EPA 7000B modified	NIOSH 7082 & EPA 7000B modified
† Method Reporting Limit	39 ppm	39 ppm	39 ppm
Sample size	0.2574 grams	0.2575 grams	0.2575 grams
§Total Lead Result	220 ppm	< 39 ppm	< 39 ppm

Comments:

Sample results have not been corrected for blank values.

Bulk samples are not covered under the AIHA-LAP, LLC service accreditation.

Wipe samples must meet ASTM E1792 criteria. Method Reporting Limits may not be valid for non-ASTM E1792 wipe samples.

*Sample preparation and analytical methods are based upon NIOSH 7082 and EPA 7000B.

† The Method Reporting Limit is the minimum concentration of Lead that the laboratory can confidently detect in the sample.

§ Total Lead Result has been rounded to two significant figures to reflect analytical precision.

‡ A "Version" indicated by "-x" after the Lab ID# with a value greater than 1 indicates a sample with amended data. The revision number is reflected by the value of "x".

Terracon

1466 66th Street, Emeryville, California

002359035

LEAD PAINT SAMPLE DATA SHEET

* Lead Analysis

___ Flame AA (EPA 7420)

___ TTLC

Page 1 of 2

PM - S. Steiner Steff@rgaenv.com Fax: 510.899.7051	PM - K. Schroeter Karin@rgaenv.com Fax: 510.899.7063	PM - K. Pilgrim Ken@rgaenv.com Fax: 510.899.7053
PM - T. Kattchee Tedd@rgaenv.com Fax: 510.899.7070	✓ PM - W. Frieszell wmfrieszell@terracon.com	PM - M. Bryant marlin.bryant@rgaenv.com Fax: 510.899.7062

Project Name/Address	Terra Linda High School, Limited 2020 Hazardous Materials Survey, 320 Nova Albion Way, San Rafael, CA						
Terracon Project Number	R1207238	Sampled By	W. Frieszell/ W. Renner		Sampling Date	February 17, 2020	
Laboratory	EMLab	<input checked="" type="checkbox"/> Other	Turn Around Time		24 Hrs	<input checked="" type="checkbox"/> Other (Specify)	

Sample ID	Paint Description and Sample Location						Condition (I/F/P)
Pb-01	Paint Color:	White	Substrate:	4" Ceramic	Component:	Wall Tile System	I
	Bldg:	C	Unit:	2 nd Floor	Room:	Women's Restroom Area	
Pb-02	Paint Color:	Grey	Substrate:	2" Ceramic	Component:	Floor Tile System	I
	Bldg:	C	Unit:	2 nd Floor	Room:	Women's Restroom Area	
Pb-03	Paint Color:	White	Substrate:	Plaster	Component:	Wall System	I
	Bldg:	C	Unit:	2 nd Floor	Room:	Men's Restroom Area	
Pb-04	Paint Color:	Grey	Substrate:	Sealant Compound	Component:	Storefront Frame Sealant	I
	Bldg:	C	Unit:	Exterior	Room:	Northern Entry Way	
Pb-05	Paint Color:	White	Substrate:	Putty	Component:	Window Glazing System	F
	Bldg:	C	Unit:	Exterior	Room:	Eastern Side	
Pb-06	Paint Color:	Light Blue	Substrate:	Concrete	Component:	Column	P
	Bldg:	E	Unit:	Exterior	Room:	Northern Walkway	
Pb-07	Paint Color:	Beige	Substrate:	Concrete	Component:	Slab	P
	Bldg:	E	Unit:	Exterior	Room:	Northern Walkway	

NAME:

SIGNATURE:

COMPANY:

DATE:

Relinquished By:	William Frieszell	<i>Will Frieszell</i>	Terracon Consultants	February 17, 2020
Received By:			<i>MCORJ</i>	<i>Feb 17 2020</i>
Relinquished By:			<i>[Signature]</i>	<i>2/20/2020 9.53</i>
Received By:				

Terracon

1466 66th Street, Emeryville, California

002359035

LEAD PAINT SAMPLE DATA SHEET

* Lead Analysis

___ Flame AA (EPA 7420)

___ TTLC

Page 2 of 2

PM - S. Steiner Steffi@rgaenv.com Fax: 510.899.7051	PM - K. Schroeter Karin@rgaenv.com Fax: 510.899.7063	PM - K. Pilgrim Ken@rgaenv.com Fax: 510.899.7053
PM - T. Kattchee Tedd@rgaenv.com Fax: 510.899.7070	✓ PM - W. Frieszell wmfrieszell@terracon.com	PM - M. Bryant marlin.bryant@rgaenv.com Fax: 510.899.7062

Project Name/Address	Terra Linda High School, Limited 2020 Hazardous Materials Survey, 320 Nova Albion Way, San Rafael, CA						
Terracon Project Number	R1207238	Sampled By	W. Frieszell/ W. Renner		Sampling Date	February 17, 2020	
Laboratory	EMLab	<input checked="" type="checkbox"/> Other	Turn Around Time	24 Hrs	<input checked="" type="checkbox"/> Other (Specify)		

Sample ID	Paint Description and Sample Location						Condition (I/F/P)
Pb-08	Paint Color:	Grey	Substrate:	Putty	Component:	Window Glazing	F
	Bldg:	I	Unit:	Exterior	Room:	Northern Side	
Pb-09	Paint Color:	Blue	Substrate:	Corrugated Metal	Component:	Wall System	I
	Bldg:	A	Unit:	Exterior	Room:	Southern Kiln Shed	
Pb-10	Paint Color:	Clear Glazing	Substrate:	Wood	Component:	Gym Flooring System	I
	Bldg:	Gymnasium	Unit:	Interior	Room:	Main Open Gymnasium	
Pb-11	Paint Color:	White	Substrate:	Concrete	Component:	Perimeter Wall System	I
	Bldg:	Gymnasium	Unit:	Interior	Room:	Main Open Gymnasium	
	Paint Color:		Substrate:		Component:		
	Bldg:		Unit:		Room:		
	Paint Color:		Substrate:		Component:		
	Bldg:		Unit:		Room:		
	Paint Color:		Substrate:		Component:		
	Bldg:		Unit:		Room:		

NAME:

SIGNATURE:

COMPANY:

DATE:

Relinquished By:	William Frieszell	<i>William Frieszell</i>	Terracon Consultants	February 17, 2020
Received By:			<i>MC [Signature]</i>	Red Ex 890 2/19/2020
Relinquished By:				
Received By:				

APPENDIX C

PCB ANALYTICAL LABORATORY DATA



McC Campbell Analytical, Inc.

"When Quality Counts"

Analytical Report

WorkOrder: 2002646

Report Created for: Terracon

1466 66th Street
Emeryville, CA 94608

Project Contact: William Frieszell

Project P.O.:

Project: R1207238; Terra Linda High School, Limited 2020
Hazardous Materials Survey, 320 Nova Albion Way,

Project Received: 02/18/2020

Analytical Report reviewed & approved for release on 02/20/2020 by:

Yen Cao
Project Manager

The report shall not be reproduced except in full, without the written approval of the laboratory. The analytical results relate only to the items tested. Results reported conform to the most current NELAP standards, where applicable, unless otherwise stated in the case narrative.





Glossary of Terms & Qualifier Definitions

Client: Terracon
Project: R1207238; Terra Linda High School, Limited 2020 Hazardous Materials Survey, 320 Nova Albion Way,
WorkOrder: 2002646

Glossary Abbreviation

%D	Serial Dilution Percent Difference
95% Interval	95% Confident Interval
DF	Dilution Factor
DI WET	(DISTLC) Waste Extraction Test using DI water
DISS	Dissolved (direct analysis of 0.45 µm filtered and acidified water sample)
DLT	Dilution Test (Serial Dilution)
DUP	Duplicate
EDL	Estimated Detection Limit
ERS	External reference sample. Second source calibration verification.
ITEF	International Toxicity Equivalence Factor
LCS	Laboratory Control Sample
LQL	Lowest Quantitation Level
MB	Method Blank
MB % Rec	% Recovery of Surrogate in Method Blank, if applicable
MDL	Method Detection Limit
ML	Minimum Level of Quantitation
MS	Matrix Spike
MSD	Matrix Spike Duplicate
N/A	Not Applicable
ND	Not detected at or above the indicated MDL or RL
NR	Data Not Reported due to matrix interference or insufficient sample amount.
PDS	Post Digestion Spike
PDSD	Post Digestion Spike Duplicate
PF	Prep Factor
RD	Relative Difference
RL	Reporting Limit (The RL is the lowest calibration standard in a multipoint calibration.)
RPD	Relative Percent Deviation
RRT	Relative Retention Time
SPK Val	Spike Value
SPKRef Val	Spike Reference Value
SPLP	Synthetic Precipitation Leachate Procedure
ST	Sorbent Tube
TCLP	Toxicity Characteristic Leachate Procedure
TEQ	Toxicity Equivalents
TZA	TimeZone Net Adjustment for sample collected outside of MAI's UTC.
WET (STLC)	Waste Extraction Test (Soluble Threshold Limit Concentration)



Glossary of Terms & Qualifier Definitions

Client: Terracon

Project: R1207238; Terra Linda High School, Limited 2020 Hazardous Materials Survey, 320 Nova Albion Way,

WorkOrder: 2002646

Analytical Qualifiers

S	Spike recovery outside accepted recovery limits.
a4	Reporting limits raised due to the sample's matrix prohibiting a full volume extraction.
c1	Surrogate recovery outside of the control limits due to the dilution of the sample.
h4	Sulfuric acid permanganate (EPA 3665) cleanup.



Analytical Report

Client: Terracon
Date Received: 02/18/2020 14:40
Date Prepared: 02/18/2020
Project: R1207238; Terra Linda High School, Limited 2020 Hazardous Materials Survey, 320 Nova Albion Way,

WorkOrder: 2002646
Extraction Method: SW3550B
Analytical Method: SW8082
Unit: mg/kg

Polychlorinated Biphenyls (PCBs) Aroclors

Client ID	Lab ID	Matrix	Date Collected	Instrument	Batch ID
PCB-06B	2002646-012A	Bulk Material	02/17/2020	GC41 02182036.d	194140

Analytes	Result	RL	DF	Date Analyzed
Aroclor1016	ND	25	50	02/19/2020 00:35
Aroclor1221	ND	25	50	02/19/2020 00:35
Aroclor1232	ND	25	50	02/19/2020 00:35
Aroclor1242	ND	25	50	02/19/2020 00:35
Aroclor1248	ND	25	50	02/19/2020 00:35
Aroclor1254	ND	25	50	02/19/2020 00:35
Aroclor1260	ND	25	50	02/19/2020 00:35
PCBs, total	ND	25	50	02/19/2020 00:35

Surrogates	REC (%)	Limits	
Decachlorobiphenyl	142	69-143	02/19/2020 00:35
Analyst(s): CN		Analytical Comments: a4,c1,h4	



Analytical Report

Client: Terracon
Date Received: 02/18/2020 14:40
Date Prepared: 02/18/2020
Project: R1207238; Terra Linda High School, Limited 2020
Hazardous Materials Survey, 320 Nova Albion Way,

WorkOrder: 2002646
Extraction Method: SW3550B/3630C
Analytical Method: SW8082
Unit: mg/kg

Polychlorinated Biphenyls (PCBs) Aroclors w/ Column Style Clean-up

Client ID	Lab ID	Matrix	Date Collected	Instrument	Batch ID
PCB-02C	2002646-005A	Bulk Material	02/17/2020	GC41 02192038.d	194168

Analytes	Result	RL	DF	Date Analyzed
Aroclor1016	ND	25	50	02/19/2020 22:08
Aroclor1221	ND	25	50	02/19/2020 22:08
Aroclor1232	ND	25	50	02/19/2020 22:08
Aroclor1242	ND	25	50	02/19/2020 22:08
Aroclor1248	ND	25	50	02/19/2020 22:08
Aroclor1254	ND	25	50	02/19/2020 22:08
Aroclor1260	ND	25	50	02/19/2020 22:08
PCBs, total	ND	25	50	02/19/2020 22:08

Surrogates	REC (%)	Qualifiers	Limits	
Decachlorobiphenyl	157	S	70-130	02/19/2020 22:08

Analyst(s): CN

Analytical Comments: a4,c1,h4

Client ID	Lab ID	Matrix	Date Collected	Instrument	Batch ID
PCB-03B	2002646-007A	Bulk Material	02/17/2020	GC41 02192026.d	194168

Analytes	Result	RL	DF	Date Analyzed
Aroclor1016	ND	25	50	02/19/2020 19:09
Aroclor1221	ND	25	50	02/19/2020 19:09
Aroclor1232	ND	25	50	02/19/2020 19:09
Aroclor1242	ND	25	50	02/19/2020 19:09
Aroclor1248	ND	25	50	02/19/2020 19:09
Aroclor1254	ND	25	50	02/19/2020 19:09
Aroclor1260	ND	25	50	02/19/2020 19:09
PCBs, total	ND	25	50	02/19/2020 19:09

Surrogates	REC (%)	Qualifiers	Limits	
Decachlorobiphenyl	162	S	70-130	02/19/2020 19:09

Analyst(s): LT

Analytical Comments: a4,c1,h4



Analytical Report

Client: Terracon

Date Received: 02/18/2020 14:40

Date Prepared: 02/18/2020

Project: R1207238; Terra Linda High School, Limited 2020
Hazardous Materials Survey, 320 Nova Albion Way,

WorkOrder: 2002646

Extraction Method: SW3550B/3630C

Analytical Method: SW8082

Unit: mg/kg

Polychlorinated Biphenyls (PCBs) Aroclors w/ Column Style Clean-up

Client ID	Lab ID	Matrix	Date Collected	Instrument	Batch ID
PCB-06A	2002646-011A	Bulk Material	02/17/2020	GC41 02192030.d	194168

Analytes	Result	RL	DF	Date Analyzed
Aroclor1016	ND	25	50	02/19/2020 20:09
Aroclor1221	ND	25	50	02/19/2020 20:09
Aroclor1232	ND	25	50	02/19/2020 20:09
Aroclor1242	ND	25	50	02/19/2020 20:09
Aroclor1248	ND	25	50	02/19/2020 20:09
Aroclor1254	ND	25	50	02/19/2020 20:09
Aroclor1260	ND	25	50	02/19/2020 20:09
PCBs, total	ND	25	50	02/19/2020 20:09

Surrogates	REC (%)	Qualifiers	Limits	Date Analyzed
Decachlorobiphenyl	157	S	70-130	02/19/2020 20:09
Analyst(s): LT		Analytical Comments: a4,c1,h4		



Analytical Report

Client: Terracon
Date Received: 02/18/2020 14:40
Date Prepared: 02/18/2020
Project: R1207238; Terra Linda High School, Limited 2020
Hazardous Materials Survey, 320 Nova Albion Way,

WorkOrder: 2002646
Extraction Method: SW3550B/3630C
Analytical Method: SW8082
Unit: mg/kg

Polychlorinated Biphenyls (PCBs) Aroclors w/ Column Style Clean-up

Client ID	Lab ID	Matrix	Date Collected	Instrument	Batch ID
PCB-01A	2002646-001A	Caulk	02/17/2020	GC41 02192015.d	194141

Analytes	Result	RL	DF	Date Analyzed
Aroclor1016	ND	25	50	02/19/2020 16:23
Aroclor1221	ND	25	50	02/19/2020 16:23
Aroclor1232	ND	25	50	02/19/2020 16:23
Aroclor1242	ND	25	50	02/19/2020 16:23
Aroclor1248	ND	25	50	02/19/2020 16:23
Aroclor1254	ND	25	50	02/19/2020 16:23
Aroclor1260	ND	25	50	02/19/2020 16:23
PCBs, total	ND	25	50	02/19/2020 16:23

Surrogates	REC (%)	Qualifiers	Limits	
Decachlorobiphenyl	164	S	70-130	02/19/2020 16:23
Analyst(s): LT		Analytical Comments: a4,c1,h4		

Client ID	Lab ID	Matrix	Date Collected	Instrument	Batch ID
PCB-01B	2002646-002A	Caulk	02/17/2020	GC41 02192036.d	194141

Analytes	Result	RL	DF	Date Analyzed
Aroclor1016	ND	25	50	02/19/2020 21:38
Aroclor1221	ND	25	50	02/19/2020 21:38
Aroclor1232	ND	25	50	02/19/2020 21:38
Aroclor1242	ND	25	50	02/19/2020 21:38
Aroclor1248	ND	25	50	02/19/2020 21:38
Aroclor1254	ND	25	50	02/19/2020 21:38
Aroclor1260	ND	25	50	02/19/2020 21:38
PCBs, total	ND	25	50	02/19/2020 21:38

Surrogates	REC (%)	Qualifiers	Limits	
Decachlorobiphenyl	156	S	70-130	02/19/2020 21:38
Analyst(s): CN		Analytical Comments: a4,c1,h4		



Analytical Report

Client: Terracon
Date Received: 02/18/2020 14:40
Date Prepared: 02/18/2020
Project: R1207238; Terra Linda High School, Limited 2020
Hazardous Materials Survey, 320 Nova Albion Way,

WorkOrder: 2002646
Extraction Method: SW3550B/3630C
Analytical Method: SW8082
Unit: mg/kg

Polychlorinated Biphenyls (PCBs) Aroclors w/ Column Style Clean-up

Client ID	Lab ID	Matrix	Date Collected	Instrument	Batch ID
PCB-02A	2002646-003A	Caulk	02/17/2020	GC41 02192037.d	194141

Analytes	Result	RL	DF	Date Analyzed
Aroclor1016	ND	25	50	02/19/2020 21:53
Aroclor1221	ND	25	50	02/19/2020 21:53
Aroclor1232	ND	25	50	02/19/2020 21:53
Aroclor1242	ND	25	50	02/19/2020 21:53
Aroclor1248	ND	25	50	02/19/2020 21:53
Aroclor1254	ND	25	50	02/19/2020 21:53
Aroclor1260	ND	25	50	02/19/2020 21:53
PCBs, total	ND	25	50	02/19/2020 21:53

Surrogates	REC (%)	Qualifiers	Limits	
Decachlorobiphenyl	154	S	70-130	02/19/2020 21:53
Analyst(s): CN		Analytical Comments: a4,c1,h4		

Client ID	Lab ID	Matrix	Date Collected	Instrument	Batch ID
PCB-02B	2002646-004A	Caulk	02/17/2020	GC41 02192023.d	194141

Analytes	Result	RL	DF	Date Analyzed
Aroclor1016	ND	25	50	02/19/2020 18:24
Aroclor1221	ND	25	50	02/19/2020 18:24
Aroclor1232	ND	25	50	02/19/2020 18:24
Aroclor1242	ND	25	50	02/19/2020 18:24
Aroclor1248	ND	25	50	02/19/2020 18:24
Aroclor1254	ND	25	50	02/19/2020 18:24
Aroclor1260	ND	25	50	02/19/2020 18:24
PCBs, total	ND	25	50	02/19/2020 18:24

Surrogates	REC (%)	Qualifiers	Limits	
Decachlorobiphenyl	160	S	70-130	02/19/2020 18:24
Analyst(s): CN		Analytical Comments: a4,c1,h4		



Analytical Report

Client: Terracon
Date Received: 02/18/2020 14:40
Date Prepared: 02/18/2020
Project: R1207238; Terra Linda High School, Limited 2020
Hazardous Materials Survey, 320 Nova Albion Way,

WorkOrder: 2002646
Extraction Method: SW3550B/3630C
Analytical Method: SW8082
Unit: mg/kg

Polychlorinated Biphenyls (PCBs) Aroclors w/ Column Style Clean-up

Client ID	Lab ID	Matrix	Date Collected	Instrument	Batch ID
PCB-03A	2002646-006A	Caulk	02/17/2020	GC41 02192025.d	194141

Analytes	Result	RL	DF	Date Analyzed
Aroclor1016	ND	25	50	02/19/2020 18:54
Aroclor1221	ND	25	50	02/19/2020 18:54
Aroclor1232	ND	25	50	02/19/2020 18:54
Aroclor1242	ND	25	50	02/19/2020 18:54
Aroclor1248	ND	25	50	02/19/2020 18:54
Aroclor1254	ND	25	50	02/19/2020 18:54
Aroclor1260	ND	25	50	02/19/2020 18:54
PCBs, total	ND	25	50	02/19/2020 18:54

Surrogates	REC (%)	Qualifiers	Limits	
Decachlorobiphenyl	155	S	70-130	02/19/2020 18:54
Analyst(s): LT			Analytical Comments: a4,c1,h4	

Client ID	Lab ID	Matrix	Date Collected	Instrument	Batch ID
PCB-04A	2002646-008A	Caulk	02/17/2020	GC41 02192027.d	194141

Analytes	Result	RL	DF	Date Analyzed
Aroclor1016	ND	25	50	02/19/2020 19:24
Aroclor1221	ND	25	50	02/19/2020 19:24
Aroclor1232	ND	25	50	02/19/2020 19:24
Aroclor1242	ND	25	50	02/19/2020 19:24
Aroclor1248	ND	25	50	02/19/2020 19:24
Aroclor1254	ND	25	50	02/19/2020 19:24
Aroclor1260	ND	25	50	02/19/2020 19:24
PCBs, total	ND	25	50	02/19/2020 19:24

Surrogates	REC (%)	Qualifiers	Limits	
Decachlorobiphenyl	150	S	70-130	02/19/2020 19:24
Analyst(s): LT			Analytical Comments: a4,c1,h4	



Analytical Report

Client: Terracon
Date Received: 02/18/2020 14:40
Date Prepared: 02/18/2020
Project: R1207238; Terra Linda High School, Limited 2020
Hazardous Materials Survey, 320 Nova Albion Way,

WorkOrder: 2002646
Extraction Method: SW3550B/3630C
Analytical Method: SW8082
Unit: mg/kg

Polychlorinated Biphenyls (PCBs) Aroclors w/ Column Style Clean-up

Client ID	Lab ID	Matrix	Date Collected	Instrument	Batch ID
PCB-04B	2002646-009A	Caulk	02/17/2020	GC41 02192028.d	194141

Analytes	Result	RL	DF	Date Analyzed
Aroclor1016	ND	25	50	02/19/2020 19:39
Aroclor1221	ND	25	50	02/19/2020 19:39
Aroclor1232	ND	25	50	02/19/2020 19:39
Aroclor1242	ND	25	50	02/19/2020 19:39
Aroclor1248	ND	25	50	02/19/2020 19:39
Aroclor1254	ND	25	50	02/19/2020 19:39
Aroclor1260	ND	25	50	02/19/2020 19:39
PCBs, total	ND	25	50	02/19/2020 19:39

Surrogates	REC (%)	Qualifiers	Limits	
Decachlorobiphenyl	153	S	70-130	02/19/2020 19:39
Analyst(s): LT			Analytical Comments: a4,c1,h4	

Client ID	Lab ID	Matrix	Date Collected	Instrument	Batch ID
PCB-05A	2002646-010A	Caulk	02/17/2020	GC41 02192029.d	194141

Analytes	Result	RL	DF	Date Analyzed
Aroclor1016	ND	25	50	02/19/2020 19:54
Aroclor1221	ND	25	50	02/19/2020 19:54
Aroclor1232	ND	25	50	02/19/2020 19:54
Aroclor1242	ND	25	50	02/19/2020 19:54
Aroclor1248	ND	25	50	02/19/2020 19:54
Aroclor1254	ND	25	50	02/19/2020 19:54
Aroclor1260	ND	25	50	02/19/2020 19:54
PCBs, total	ND	25	50	02/19/2020 19:54

Surrogates	REC (%)	Qualifiers	Limits	
Decachlorobiphenyl	167	S	70-130	02/19/2020 19:54
Analyst(s): LT			Analytical Comments: a4,c1,h4	



Analytical Report

Client: Terracon
Date Received: 02/18/2020 14:40
Date Prepared: 02/18/2020
Project: R1207238; Terra Linda High School, Limited 2020
Hazardous Materials Survey, 320 Nova Albion Way,

WorkOrder: 2002646
Extraction Method: SW3550B/3630C
Analytical Method: SW8082
Unit: mg/kg

Polychlorinated Biphenyls (PCBs) Aroclors w/ Column Style Clean-up

Client ID	Lab ID	Matrix	Date Collected	Instrument	Batch ID
PCB-07A	2002646-013A	Caulk	02/17/2020	GC41 02192035.d	194141

Analytes	Result	RL	DF	Date Analyzed
Aroclor1016	ND	25	50	02/19/2020 21:23
Aroclor1221	ND	25	50	02/19/2020 21:23
Aroclor1232	ND	25	50	02/19/2020 21:23
Aroclor1242	ND	25	50	02/19/2020 21:23
Aroclor1248	ND	25	50	02/19/2020 21:23
Aroclor1254	ND	25	50	02/19/2020 21:23
Aroclor1260	ND	25	50	02/19/2020 21:23
PCBs, total	ND	25	50	02/19/2020 21:23

Surrogates	REC (%)	Qualifiers	Limits	Date Analyzed
Decachlorobiphenyl	164	S	70-130	02/19/2020 21:23
Analyst(s): CN	Analytical Comments: a4,c1,h4			



Quality Control Report

Client: Terracon
Date Prepared: 02/18/2020
Date Analyzed: 02/18/2020 - 02/19/2020
Instrument: GC41
Matrix: Bulk Material
Project: R1207238; Terra Linda High School, Limited 2020
Hazardous Materials Survey, 320 Nova Albion Way,
San Rafael, CA

WorkOrder: 2002646
BatchID: 194140
Extraction Method: SW3550B
Analytical Method: SW8082
Unit: mg/kg
Sample ID: MB/LCS/LCSD-194140

QC Summary Report for SW8082

Analyte	MB Result	MDL	RL	SPK Val	MB SS %REC	MB SS Limits
Aroclor1016	ND	0.0500	0.0500	-	-	-
Aroclor1221	ND	0.0500	0.0500	-	-	-
Aroclor1232	ND	0.0500	0.0500	-	-	-
Aroclor1242	ND	0.0500	0.0500	-	-	-
Aroclor1248	ND	0.0500	0.0500	-	-	-
Aroclor1254	ND	0.0500	0.0500	-	-	-
Aroclor1260	ND	0.0500	0.0500	-	-	-

Surrogate Recovery

Decachlorobiphenyl	0.0507			0.05	101	75-136
--------------------	--------	--	--	------	-----	--------

Analyte	LCS Result	LCSD Result	SPK Val	LCS %REC	LCSD %REC	LCS/LCSD Limits	RPD	RPD Limit
Aroclor1016	0.154	0.154	0.15	103	103	90-125	0.0370	20
Aroclor1260	0.154	0.152	0.15	103	102	77-122	1.12	20

Surrogate Recovery

Decachlorobiphenyl	0.0534	0.0520	0.050	107	104	75-136	2.56	20
--------------------	--------	--------	-------	-----	-----	--------	------	----



Quality Control Report

Client: Terracon
Date Prepared: 02/18/2020
Date Analyzed: 02/19/2020
Instrument: GC41
Matrix: Bulk Material
Project: R1207238; Terra Linda High School, Limited 2020
Hazardous Materials Survey, 320 Nova Albion Way,
San Rafael, CA

WorkOrder: 2002646
BatchID: 194168
Extraction Method: SW3550B/3630C
Analytical Method: SW8082
Unit: mg/kg
Sample ID: MB/LCS/LCSD-194168

QC Summary Report for SW8082 w/ Column Clean-up

Analyte	MB Result	MDL	RL	SPK Val	MB SS %REC	MB SS Limits
Aroclor1016	ND	0.0500	0.0500	-	-	-
Aroclor1221	ND	0.0500	0.0500	-	-	-
Aroclor1232	ND	0.0500	0.0500	-	-	-
Aroclor1242	ND	0.0500	0.0500	-	-	-
Aroclor1248	ND	0.0500	0.0500	-	-	-
Aroclor1254	ND	0.0500	0.0500	-	-	-
Aroclor1260	ND	0.0500	0.0500	-	-	-

Surrogate Recovery

Decachlorobiphenyl	0.0577			0.05	115	70-130
--------------------	--------	--	--	------	-----	--------

Analyte	LCS Result	LCSD Result	SPK Val	LCS %REC	LCSD %REC	LCS/LCSD Limits	RPD	RPD Limit
Aroclor1016	0.140	0.148	0.15	93	99	70-130	5.51	20
Aroclor1260	0.158	0.160	0.15	105	106	70-130	1.19	20

Surrogate Recovery

Decachlorobiphenyl	0.0584	0.0571	0.050	117	114	70-130	2.15	20
--------------------	--------	--------	-------	-----	-----	--------	------	----



Quality Control Report

Client: Terracon
Date Prepared: 02/18/2020
Date Analyzed: 02/19/2020
Instrument: GC41
Matrix: Bulk Material
Project: R1207238; Terra Linda High School, Limited 2020
Hazardous Materials Survey, 320 Nova Albion Way,
San Rafael, CA

WorkOrder: 2002646
BatchID: 194141
Extraction Method: SW3550B/3630C
Analytical Method: SW8082
Unit: mg/kg
Sample ID: MB/LCS/LCSD-194141

QC Summary Report for SW8082 w/ Column Clean-up

Analyte	MB Result	MDL	RL	SPK Val	MB SS %REC	MB SS Limits
Aroclor1016	ND	0.0500	0.0500	-	-	-
Aroclor1221	ND	0.0500	0.0500	-	-	-
Aroclor1232	ND	0.0500	0.0500	-	-	-
Aroclor1242	ND	0.0500	0.0500	-	-	-
Aroclor1248	ND	0.0500	0.0500	-	-	-
Aroclor1254	ND	0.0500	0.0500	-	-	-
Aroclor1260	ND	0.0500	0.0500	-	-	-

Surrogate Recovery

Decachlorobiphenyl	0.0522			0.05	104	70-130
--------------------	--------	--	--	------	-----	--------

Analyte	LCS Result	LCSD Result	SPK Val	LCS %REC	LCSD %REC	LCS/LCSD Limits	RPD	RPD Limit
Aroclor1016	0.145	0.147	0.15	96	98	70-130	1.35	20
Aroclor1260	0.149	0.146	0.15	99	98	70-130	1.63	20

Surrogate Recovery

Decachlorobiphenyl	0.0537	0.0518	0.050	107	104	70-130	3.44	20
--------------------	--------	--------	-------	-----	-----	--------	------	----



1534 Willow Pass Rd
Pittsburg, CA 94565-1701
(925) 252-9262

CHAIN-OF-CUSTODY RECORD

Page 1 of 1

WorkOrder: 2002646

ClientCode: RGAE

☐ WaterTrax☐ WriteOn☐ EDF☐ Excel☐ EQulS☒ Email☐ HardCopy☐ ThirdParty☐ J-flag☐ Detection Summary☐ Dry-Weight

Report to:

William Frieszell

Terracon

1466 66th Street

Emeryville, CA 94608

(510) 547-7771

FAX: (510) 547-1983

Email: wmfrieszell@terracon.com

cc/3rd Party:

PO:

Project: R1207238; Terra Linda High School,
Limited 2020 Hazardous Materials Survey,

Bill to:

Anita G. Ilsley

Terracon

1466 66th Street

Emeryville, CA 94608

anita.ilsley@rgaenv.com

Requested TAT: 1 day;

Date Received: 02/18/2020

Date Logged: 02/18/2020

Lab ID	Client ID	Matrix	Collection Date	Hold	Requested Tests (See legend below)											
					1	2	3	4	5	6	7	8	9	10	11	12
2002646-001	PCB-01A	Caulk	2/17/2020 00:00	<input type="checkbox"/>			A	A								
2002646-002	PCB-01B	Caulk	2/17/2020 00:00	<input type="checkbox"/>			A	A								
2002646-003	PCB-02A	Caulk	2/17/2020 00:00	<input type="checkbox"/>			A	A								
2002646-004	PCB-02B	Caulk	2/17/2020 00:00	<input type="checkbox"/>			A	A								
2002646-005	PCB-02C	Bulk Material	2/17/2020 00:00	<input type="checkbox"/>	A	A		A								
2002646-006	PCB-03A	Caulk	2/17/2020 00:00	<input type="checkbox"/>			A	A								
2002646-007	PCB-03B	Bulk Material	2/17/2020 00:00	<input type="checkbox"/>	A	A		A								
2002646-008	PCB-04A	Caulk	2/17/2020 00:00	<input type="checkbox"/>			A	A								
2002646-009	PCB-04B	Caulk	2/17/2020 00:00	<input type="checkbox"/>			A	A								
2002646-010	PCB-05A	Caulk	2/17/2020 00:00	<input type="checkbox"/>			A	A								
2002646-011	PCB-06A	Bulk Material	2/17/2020 00:00	<input type="checkbox"/>	A	A		A								
2002646-012	PCB-06B	Bulk Material	2/17/2020 00:00	<input type="checkbox"/>	A			A								
2002646-013	PCB-07A	Caulk	2/17/2020 00:00	<input type="checkbox"/>			A	A								

Test Legend:

1	8082_PCB_Bulk
5	
9	

2	8082_PCB_SG_Bulk
6	
10	

3	8082_PCB_SG_Caulk
7	
11	

4	PRDisposal Fee
8	
12	

Project Manager: Angela Rydelius

Prepared by: Lilly Ortiz

Comments:

NOTE: Soil samples are discarded 60 days after results are reported unless other arrangements are made (Water samples are 30 days).
Hazardous samples will be returned to client or disposed of at client expense.



McC Campbell Analytical, Inc.

"When Quality Counts"

1534 Willow Pass Road, Pittsburg, CA 94565-1701
Toll Free Telephone: (877) 252-9262 / Fax: (925) 252-9269
http://www.mcccampbell.com / E-mail: main@mcccampbell.com

WORK ORDER SUMMARY

Client Name: TERRACON
Client Contact: William Frieszell
Contact's Email: wmfrieszell@terracon.com

Project: R1207238; Terra Linda High School, Limited 2020
Hazardous Materials Survey, 320 Nova Albion Way, San
Rafael, CA
Comments:

Work Order: 2002646
QC Level: LEVEL 2
Date Logged: 2/18/2020

☐ WaterTrax ☐ WriteOn ☐ EDF ☐ Excel ☐ EQUIS ☒ Email ☐ HardCopy ☐ ThirdParty ☐ J-flag

Lab ID	Client ID	Matrix	Test Name	Containers /Composites	Bottle & Preservative	De- chlorinated	Collection Date & Time	TAT	Sediment Content	Hold	SubOut
2002646-001A	PCB-01A	Caulk	SW8082 (PCBs w/ Column Style Clean-up)	1	Plastic Baggie, Small	<input type="checkbox"/>	2/17/2020	1 day		<input type="checkbox"/>	
2002646-002A	PCB-01B	Caulk	SW8082 (PCBs w/ Column Style Clean-up)	1	Plastic Baggie, Small	<input type="checkbox"/>	2/17/2020	1 day		<input type="checkbox"/>	
2002646-003A	PCB-02A	Caulk	SW8082 (PCBs w/ Column Style Clean-up)	1	Plastic Baggie, Small	<input type="checkbox"/>	2/17/2020	1 day		<input type="checkbox"/>	
2002646-004A	PCB-02B	Caulk	SW8082 (PCBs w/ Column Style Clean-up)	1	Plastic Baggie, Small	<input type="checkbox"/>	2/17/2020	1 day		<input type="checkbox"/>	
2002646-005A	PCB-02C	Bulk Material	SW8082 (PCBs w/ Column Style Clean-up)	1	Plastic Baggie, Small	<input type="checkbox"/>	2/17/2020	1 day		<input type="checkbox"/>	
			SW8082 (PCBs)			<input type="checkbox"/>		1 day		<input checked="" type="checkbox"/>	
2002646-006A	PCB-03A	Caulk	SW8082 (PCBs w/ Column Style Clean-up)	1	Plastic Baggie, Medium	<input type="checkbox"/>	2/17/2020	1 day		<input type="checkbox"/>	
2002646-007A	PCB-03B	Bulk Material	SW8082 (PCBs w/ Column Style Clean-up)	1	Plastic Baggie, Small	<input type="checkbox"/>	2/17/2020	1 day		<input type="checkbox"/>	
			SW8082 (PCBs)			<input type="checkbox"/>		1 day		<input checked="" type="checkbox"/>	
2002646-008A	PCB-04A	Caulk	SW8082 (PCBs w/ Column Style Clean-up)	1	Plastic Baggie, Medium	<input type="checkbox"/>	2/17/2020	1 day		<input type="checkbox"/>	
2002646-009A	PCB-04B	Caulk	SW8082 (PCBs w/ Column Style Clean-up)	1	Plastic Baggie, Medium	<input type="checkbox"/>	2/17/2020	1 day		<input type="checkbox"/>	
2002646-010A	PCB-05A	Caulk	SW8082 (PCBs w/ Column Style Clean-up)	1	Plastic Baggie, Medium	<input type="checkbox"/>	2/17/2020	1 day		<input type="checkbox"/>	

NOTES: - STLC and TCLP extractions require 2 days to complete; therefore, all TATs begin after the extraction is completed (i.e., One-day TAT yields results in 3 days from sample submission).

- MAI assumes that all material present in the provided sampling container is considered part of the sample - MAI does not exclude any material from the sample prior to sample preparation unless requested in writing by the client.



McC Campbell Analytical, Inc.

"When Quality Counts"

1534 Willow Pass Road, Pittsburg, CA 94565-1701
Toll Free Telephone: (877) 252-9262 / Fax: (925) 252-9269
http://www.mccampbell.com / E-mail: main@mccampbell.com

WORK ORDER SUMMARY

Client Name: TERRACON
Client Contact: William Frieszell
Contact's Email: wmfrieszell@terracon.com

Project: R1207238; Terra Linda High School, Limited 2020
Hazardous Materials Survey, 320 Nova Albion Way, San
Rafael, CA
Comments:

Work Order: 2002646
QC Level: LEVEL 2
Date Logged: 2/18/2020

☐ WaterTrax ☐ WriteOn ☐ EDF ☐ Excel ☐ EQUIS ☒ Email ☐ HardCopy ☐ ThirdParty ☐ J-flag

Lab ID	Client ID	Matrix	Test Name	Containers /Composites	Bottle & Preservative	De- chlorinated	Collection Date & Time	TAT	Sediment Content	Hold	SubOut
2002646-011A	PCB-06A	Bulk Material	SW8082 (PCBs w/ Column Style Clean-up)	1	Plastic Baggie, Medium	<input type="checkbox"/>	2/17/2020	1 day		<input type="checkbox"/>	
			SW8082 (PCBs)			<input type="checkbox"/>		1 day		<input checked="" type="checkbox"/>	
2002646-012A	PCB-06B	Bulk Material	SW8082 (PCBs)	1	Plastic Baggie, Medium	<input type="checkbox"/>	2/17/2020	1 day		<input type="checkbox"/>	
2002646-013A	PCB-07A	Caulk	SW8082 (PCBs w/ Column Style Clean-up)	1	Plastic Baggie, Medium	<input type="checkbox"/>	2/17/2020	1 day		<input type="checkbox"/>	

NOTES: - STLC and TCLP extractions require 2 days to complete; therefore, all TATs begin after the extraction is completed (i.e., One-day TAT yields results in 3 days from sample submission).

- MAI assumes that all material present in the provided sampling container is considered part of the sample - MAI does not exclude any material from the sample prior to sample preparation unless requested in writing by the client.

Terracon

1466 66th Street, Emeryville, California

RUSH

PCB BULK SAMPLE DATA SHEET

PCB ANALYSIS

Page 1 of 2

PM - S. Steiner Steff@rgaenv.com	PM - K. Schroeter Karin@rgaenv.com	PM - K. Pilgrim Ken@rgaenv.com
PM - T. Kattchee Tedd@rgaenv.com	✓ PM - W. Frieszell wmfrieszell@terracon.com	

Project Name/Address	Terra Linda High School, Limited 2020 Hazardous Materials Survey, 320 Nova Albion Way, San Rafael, CA					
Terracon Project Number	R1207238	Sampled By	W. Frieszell/ W. Renner	Sampling Date	February 17, 2020	
Laboratory	McC Campbellpcb	X	Other	Turn Around Time	RUSH 72 Hrs	X Other (Specify)

***FAX OR E-MAIL REPORT TO: SEE ABOVE PROJECT MANAGER (PM) ***

PCB# 01	Material Description: Storefront Frame to Concrete Sealant - Grey	
Sample ID	Sample Location & Material Location	Quantity:
PCB-01 A	Building C, Exterior - Northern Side of Building at Main Entry Way	
B		
C		
Material Location:		
PCB# 02	Material Description: Window Putty System - White with Grey Sealant	
Sample ID	Sample Location & Material Location	Quantity:
PCB-02 A	Building C, Exterior - Eastern Side of Building at Southeastern Window Assembly	
PCB-02 B	Building M, Exterior - Western Side of Building at Northern Window Assembly	
PCB-02 C	Building M, Exterior - Western Side of Building at Southern Window Assembly	
Material Location:		
PCB# 03	Material Description: Rubberized Window Frame to Concrete Sealant - Black	
Sample ID	Sample Locations	Quantity:
PCB-03 A	Building C, Exterior - Eastern Side of Building at Southeastern Window Assembly	
PCB-03 B	Building M, Exterior - Western Side of Building at Northern Window Assembly	
C		
Material Location:		
PCB# 04	Material Description: Window Frame to Concrete Sealant - White	
Sample ID	Sample Location & Material Location	Quantity:
PCB-04 A	Building L, Exterior - Eastern Side of Building at Southern Window Assembly	
PCB-04 B	Building A, Exterior - Southern Side of Building at Western Window Assembly	
C		
Material Location:		
PCB# 05	Material Description: Storefront Frame to Glass Sealant - Grey	
Sample ID	Sample Location & Material Location	Quantity:
PCB-05 A	Building L, Exterior - Northern Side of Building at Main Entry Way	
B		
C		
Material Location:		

NAME:

SIGNATURE:

COMPANY:

DATE:

Relinquished By:	William Frieszell	<i>Will Frieszell</i>	Terracon Consultants	February 17, 2020
Received By:	<i>Grenzo</i>	<i>LAP</i>	<i>MAI</i>	2/18/20 1324
Relinquished By:	<i>Grenzo</i>	<i>LAP</i>	<i>MAI</i>	2/18/20 1440
Received By:	<i>Lilly Ortiz</i>	<i>Lilly Ortiz</i>	<i>MAI</i>	2/18/20 1440

*Received extra samples labeled "PCB-01B, PCB-04B, PCB-05A"

Page 18 of 20

2002646

Terracon

1466 66th Street, Emeryville, California

RUSH

PCB BULK SAMPLE DATA SHEET

PCB ANALYSIS

Page 2 of 2

PM - S. Steiner Steff@rgaenv.com	PM - K. Schroeter Karin@rgaenv.com	PM - K. Pilgrim Ken@rgaenv.com
PM - T. Kattchee Tedd@rgaenv.com	<input checked="" type="checkbox"/> PM - W. Frieszell wmfrieszell@terracon.com	

Project Name/Address	Terra Linda High School, Limited 2020 Hazardous Materials Survey, 320 Nova Albion Way, San Rafael, CA						
Terracon Project Number	R1207238	Sampled By	W. Frieszell/ W. Renner	Sampling Date	February 17, 2020		
Laboratory	McCampbellpcb	<input checked="" type="checkbox"/> Other	Turn Around Time	72 Hrs	<input checked="" type="checkbox"/> Other (Specify)		

***FAX OR E-MAIL REPORT TO: SEE ABOVE PROJECT MANAGER (PM) ***

PCB# 06	Material Description: Window Frame to Concrete Sealant - Grey	
Sample ID	Sample Location & Material Location	Quantity:
PCB-06 A	Building A, Exterior - Southern Side of Building at Southern Window Assembly	
B		
C		
Material Location:		
PCB#	Material Description:	
Sample ID	Sample Location & Material Location	Quantity:
A		
B		
C		
Material Location:		
PCB#	Material Description:	
Sample ID	Sample Locations	Quantity:
A		
B		
C		
Material Location:		
PCB#	Material Description:	
Sample ID	Sample Location & Material Location	Quantity:
A		
B		
C		
Material Location:		
PCB#	Material Description:	
Sample ID	Sample Location & Material Location	Quantity:
A		
B		
C		
Material Location:		

NAME:

SIGNATURE:

COMPANY:

DATE:

Relinquished By:	William Frieszell	<i>Will Frieszell</i>	Terracon Consultants	February 17, 2020
Received By:	<i>Corenzo</i>	<i>WAF</i>	<i>MAI</i>	<i>2/18/20 1320</i>
Relinquished By:	<i>Corenzo</i>	<i>WAF</i>	<i>MAI</i>	<i>2/18/20 1440</i>
Received By:	<i>Lilly Ortiz</i>	<i>Lilly Ortiz</i>	<i>MAI</i>	<i>2/18/20 1440</i>



Sample Receipt Checklist

Client Name: **Terracon**
Project: **R1207238; Terra Linda High School, Limited 2020 Hazardous Materials Survey, 320 Nova Albion Way, San Rafael, CA**
WorkOrder No: **2002646** Matrix: Bulk Material/Caulk
Carrier: Lorenzo Perez (MAI Courier)

Date and Time Received: **2/18/2020 14:40**
Date Logged: **2/18/2020**
Received by: Lilly Ortiz
Logged by: Lilly Ortiz

Chain of Custody (COC) Information

Chain of custody present?	Yes <input checked="" type="checkbox"/>	No <input type="checkbox"/>	
Chain of custody signed when relinquished and received?	Yes <input checked="" type="checkbox"/>	No <input type="checkbox"/>	
Chain of custody agrees with sample labels?	Yes <input checked="" type="checkbox"/>	No <input type="checkbox"/>	
Sample IDs noted by Client on COC?	Yes <input checked="" type="checkbox"/>	No <input type="checkbox"/>	
Date and Time of collection noted by Client on COC?	Yes <input checked="" type="checkbox"/>	No <input type="checkbox"/>	
Sampler's name noted on COC?	Yes <input checked="" type="checkbox"/>	No <input type="checkbox"/>	
COC agrees with Quote?	Yes <input type="checkbox"/>	No <input type="checkbox"/>	NA <input checked="" type="checkbox"/>

Sample Receipt Information

Custody seals intact on shipping container/cooler?	Yes <input type="checkbox"/>	No <input type="checkbox"/>	NA <input checked="" type="checkbox"/>
Shipping container/cooler in good condition?	Yes <input checked="" type="checkbox"/>	No <input type="checkbox"/>	
Samples in proper containers/bottles?	Yes <input checked="" type="checkbox"/>	No <input type="checkbox"/>	
Sample containers intact?	Yes <input checked="" type="checkbox"/>	No <input type="checkbox"/>	
Sufficient sample volume for indicated test?	Yes <input checked="" type="checkbox"/>	No <input type="checkbox"/>	

Sample Preservation and Hold Time (HT) Information

All samples received within holding time?	Yes <input checked="" type="checkbox"/>	No <input type="checkbox"/>	NA <input type="checkbox"/>
Samples Received on Ice?	Yes <input checked="" type="checkbox"/>	No <input type="checkbox"/>	

(Ice Type: WET ICE)

Sample/Temp Blank temperature	Temp: 2°C	NA <input type="checkbox"/>
Water - VOA vials have zero headspace / no bubbles?	Yes <input type="checkbox"/> No <input type="checkbox"/>	NA <input checked="" type="checkbox"/>
Sample labels checked for correct preservation?	Yes <input checked="" type="checkbox"/> No <input type="checkbox"/>	
pH acceptable upon receipt (Metal: <2; Nitrate 353.2/4500NO3: <2; 522: <4; 218.7: >8)?	Yes <input type="checkbox"/> No <input type="checkbox"/>	NA <input checked="" type="checkbox"/>

UCMR Samples:

pH tested and acceptable upon receipt (200.8: ≤2; 525.3: ≤4; 530: ≤7; 541: <3; 544: <6.5 & 7.5)?	Yes <input type="checkbox"/> No <input type="checkbox"/>	NA <input checked="" type="checkbox"/>
Free Chlorine tested and acceptable upon receipt (<0.1mg/L)?	Yes <input type="checkbox"/> No <input type="checkbox"/>	NA <input checked="" type="checkbox"/>

Comments:

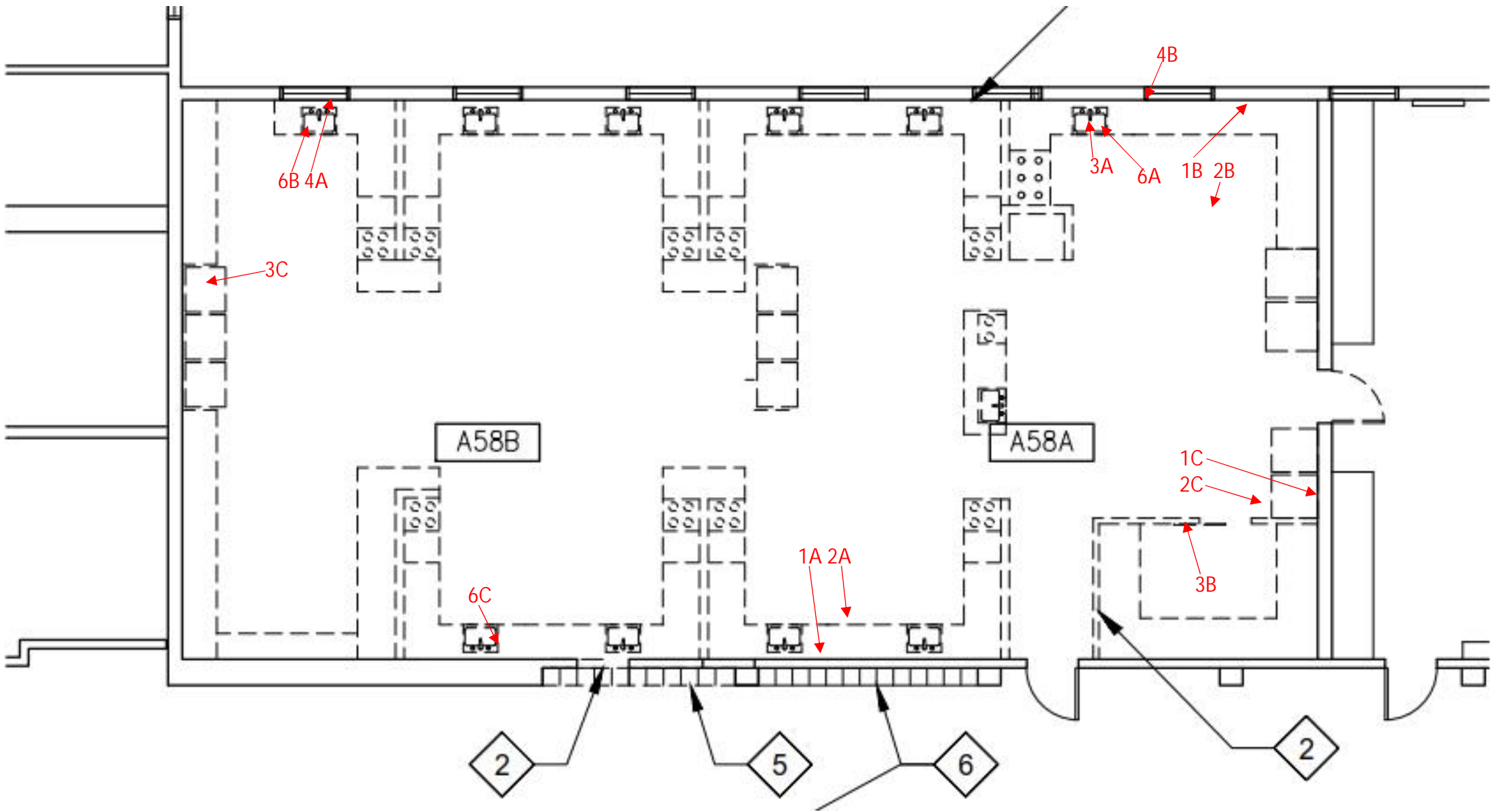
APPENDIX D

SAMPLE LOCATION DIAGRAMS

Terra Linda High School
2020
Renovation/Modernization
Projects

Limited Hazardous
Materials Survey

320 Nova Albion Way
San Rafael, California



↑
N
Not to Scale

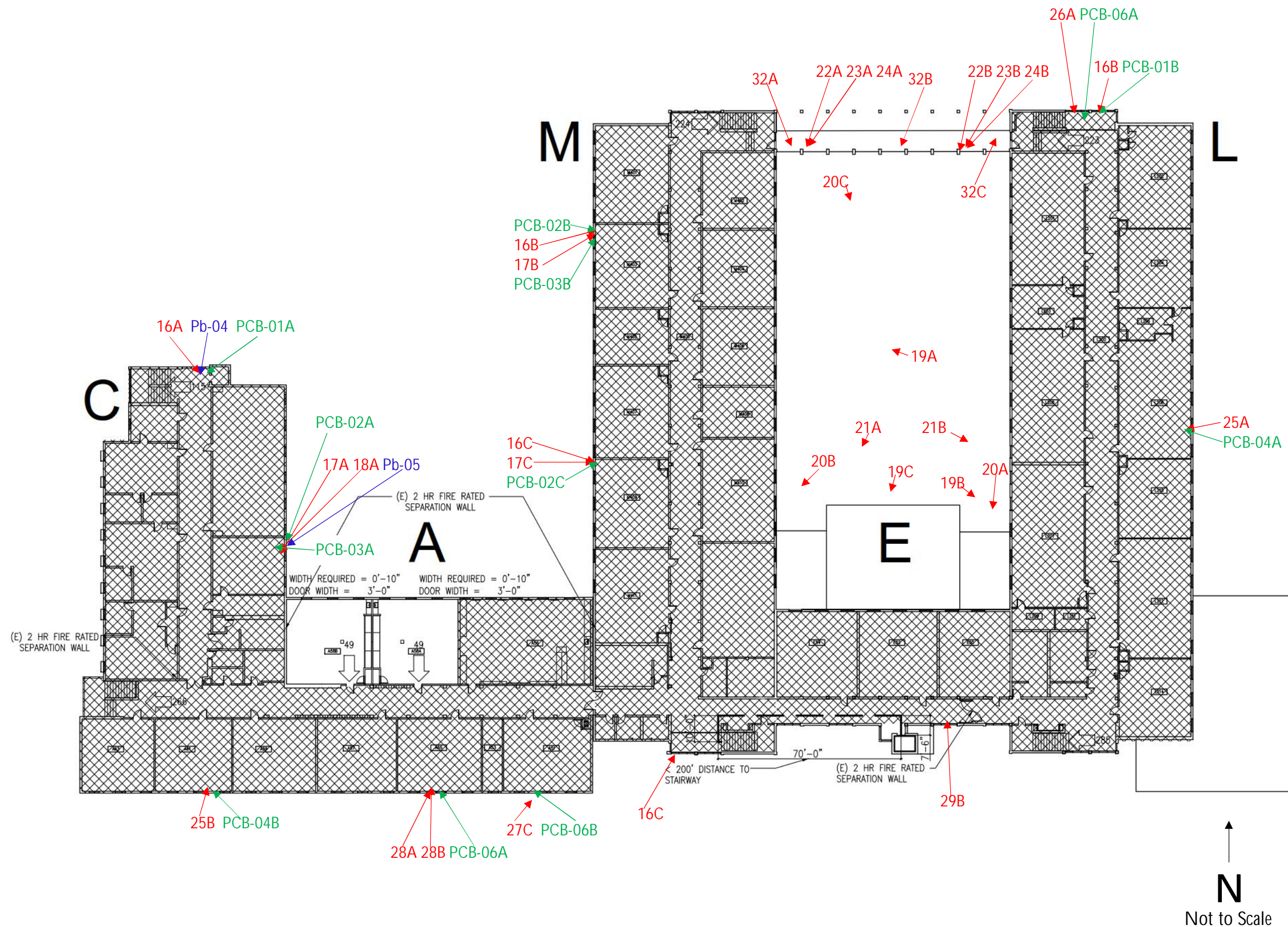
<u>Date</u> February 2020	<u>Drafted By</u> WMF
<u>Project Number</u> R1207238	<u>Checked By</u> KMS
<u>Sheet Name</u> Interior - Room 58 Sample Location Diagram	
<u>Sheet Number</u> Figure 1	

Terra Linda High School

2020
Renovation/Modernization
Projects

Limited Hazardous
Materials Survey

320 Nova Albion Way
San Rafael, California



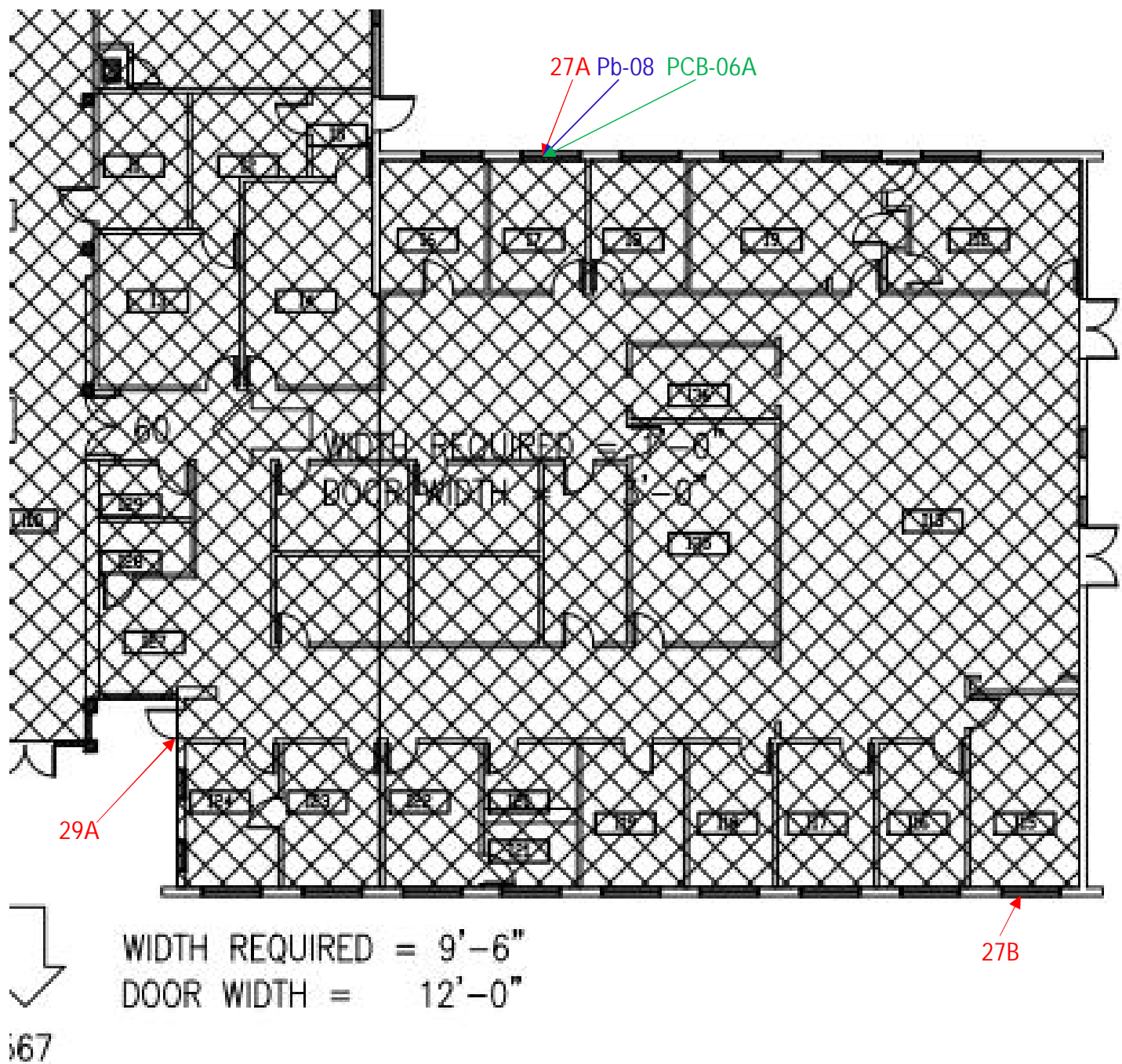
<u>Date</u> February 2020	<u>Drafted By</u> WMF
<u>Project Number</u> R1207238	<u>Checked By</u> KMS
<u>Sheet Name</u> Exterior - Main Classroom Sample Location Diagram	
<u>Sheet Number</u> Figure 2	

Terra Linda High School

2020
Renovation/Modernization
Projects

Limited Hazardous
Materials Survey

320 Nova Albion Way
San Rafael, California



N
Not to Scale

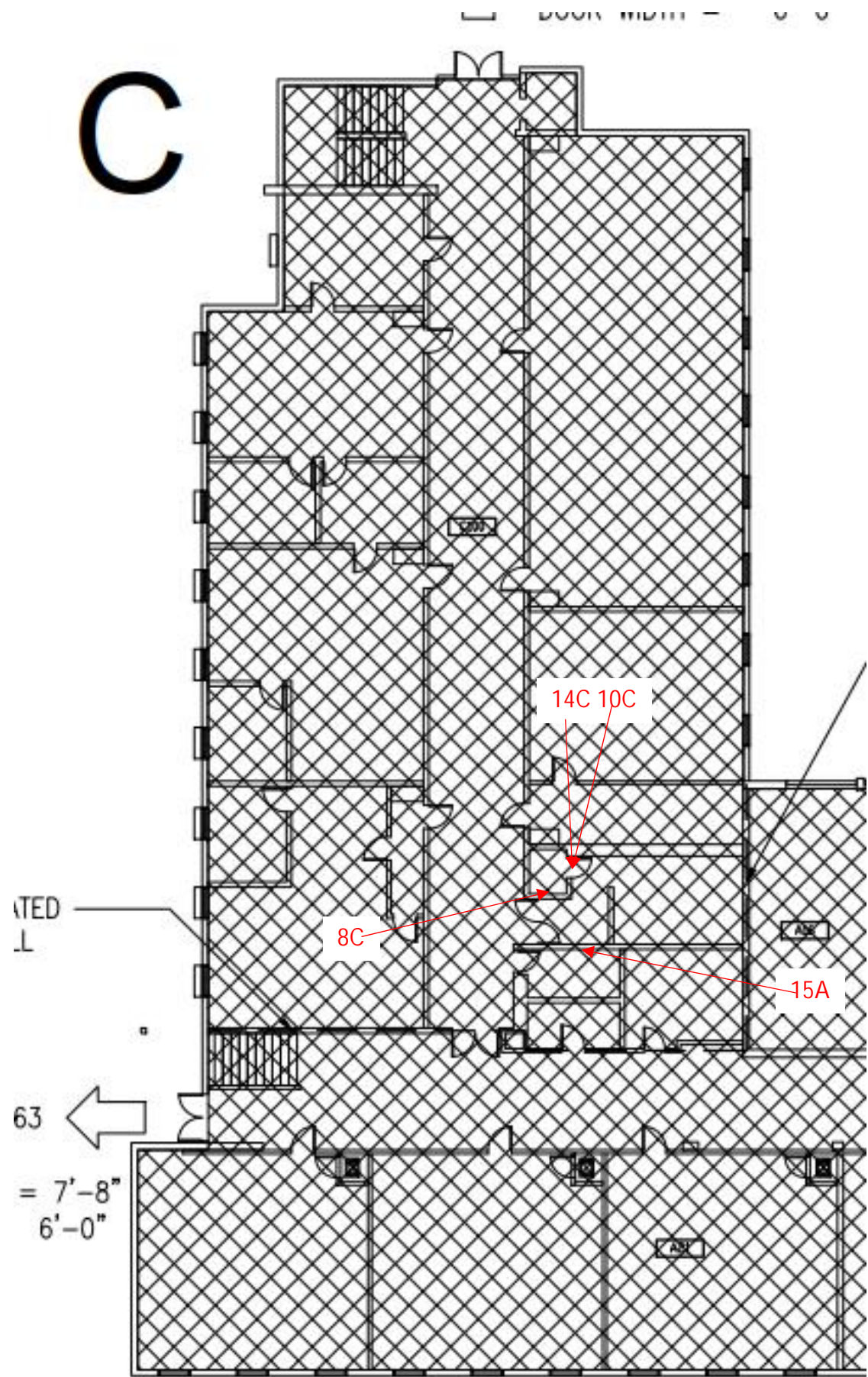
<u>Date</u> February 2020	<u>Drafted By</u> WMF
<u>Project Number</u> R1207238	<u>Checked By</u> KMS
<u>Sheet Name</u> Exterior - Building I Sample Location Diagram	
<u>Sheet Number</u> Figure 3	

Terra Linda High School

2020
Renovation/Modernization
Projects

Limited Hazardous
Materials Survey

320 Nova Albion Way
San Rafael, California



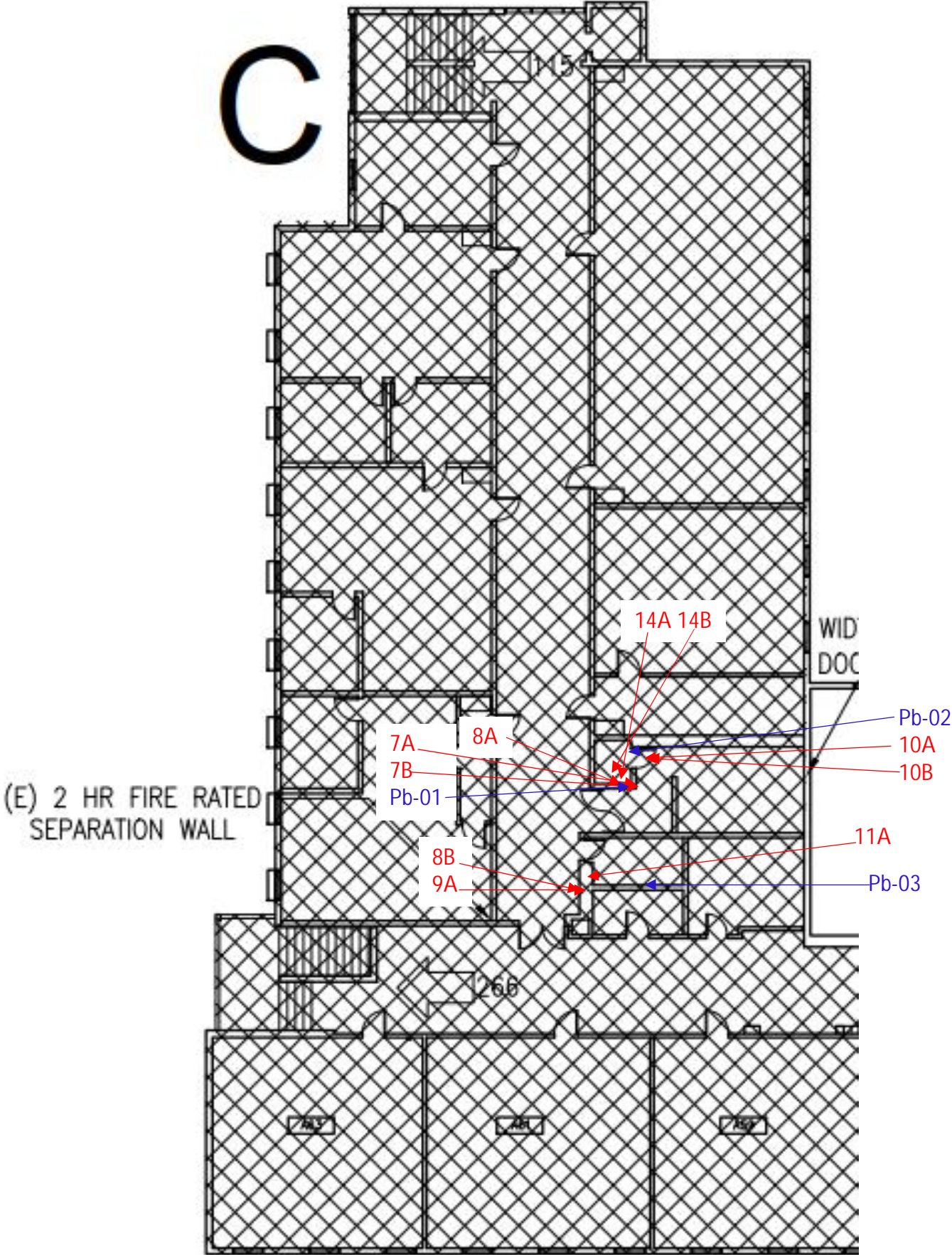
↑
N
Not to Scale

<u>Date</u> February 2020	<u>Drafted By</u> WMF
<u>Project Number</u> R1207238	<u>Checked By</u> KMS
<u>Sheet Name</u> Interior - Building C 1 st Floor Sample Location Diagram	
<u>Sheet Number</u> Figure 4	

Terra Linda High School
2020
Renovation/Modernization
Projects

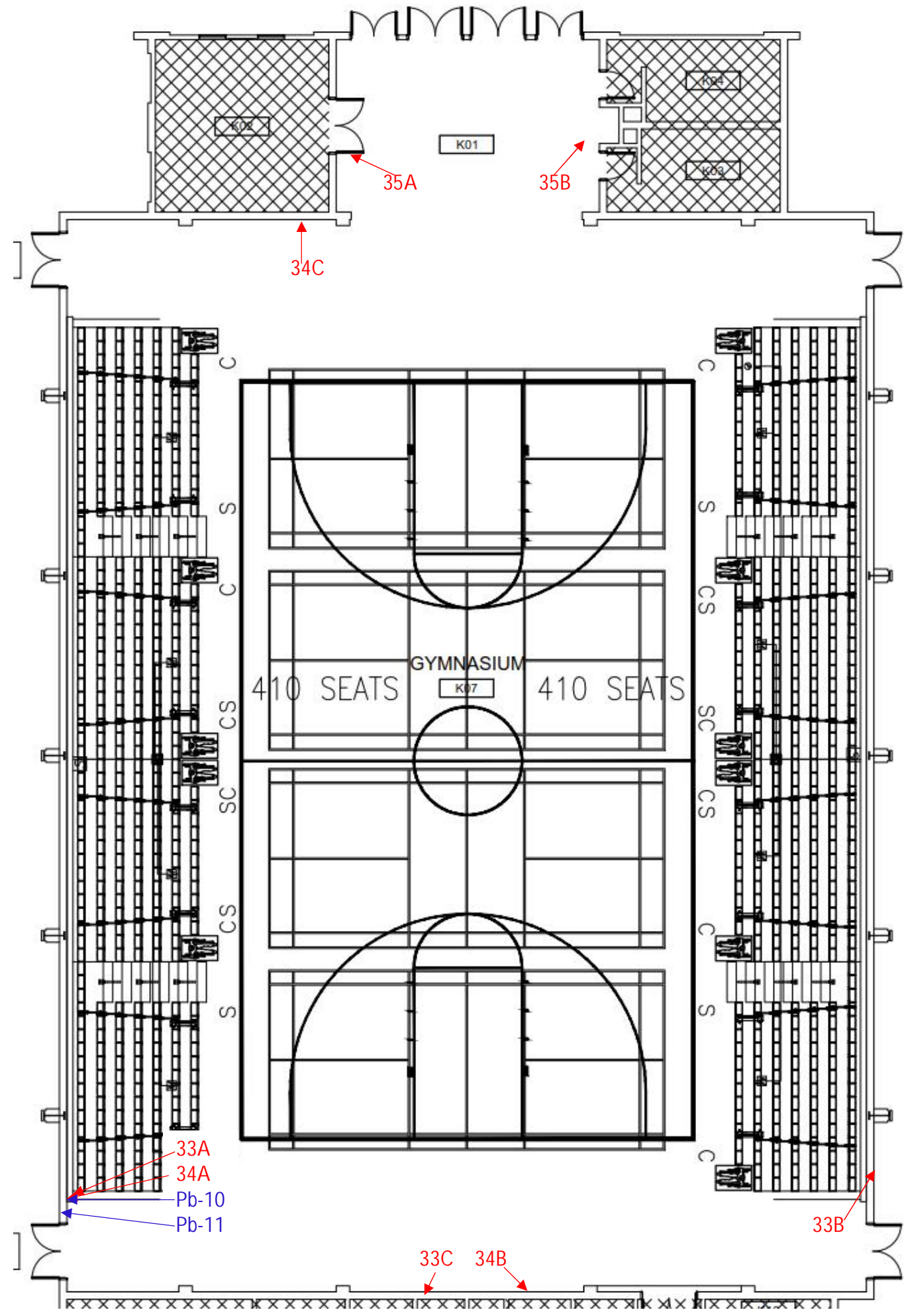
Limited Hazardous
Materials Survey

320 Nova Albion Way
San Rafael, California



↑
N
Not to Scale

<u>Date</u> February 2020	<u>Drafted By</u> WMF
<u>Project Number</u> R1207238	<u>Checked By</u> KMS
<u>Sheet Name</u> Interior - Building C 2 nd Floor Sample Location Diagram	
<u>Sheet Number</u> Figure 5	



↑
N
Not to Scale



Terra Linda High School
2020
Renovation/Modernization
Projects

Limited Hazardous
Materials Survey

320 Nova Albion Way
San Rafael, California

<u>Date</u> February 2020	<u>Drafted By</u> WMF
<u>Project Number</u> R1207238	<u>Checked By</u> KMS
<u>Sheet Name</u> Interior - Gymnasium Sample Location Diagram	
<u>Sheet Number</u> Figure 6	

APPENDIX E

LICENSES AND CERTIFICATIONS

State of California
Division of Occupational Safety and Health
Certified Asbestos Consultant

William M Frieszell

Name



Certification No. **12-4853**

Expires on **02/15/21**

This certification was issued by the Division of Occupational Safety and Health as authorized by Sections 7180 et seq. of the Business and Professions Code.



STATE OF CALIFORNIA
DEPARTMENT OF PUBLIC HEALTH



LEAD-RELATED CONSTRUCTION CERTIFICATE

INDIVIDUAL:



William Frieszell

CERTIFICATE TYPE:

Lead Inspector/Assessor

NUMBER:

LRC-00003666

EXPIRATION DATE:

12/11/2020

Disclaimer: This document alone should not be relied upon to confirm certification status. Compare the individual's photo and name to another valid form of government issued photo identification. Verify the individual's certification status by searching for Lead-Related Construction Professionals at www.cdph.ca.gov/programs/clppb or calling (800) 597-LEAD.

State of California
Division of Occupational Safety and Health
Certified Site Surveillance Technician

Wyatt B Renner

Name

Certification No. **15-5504**

Expires on **10/14/20**



This certification was issued by the Division of Occupational Safety and Health as authorized by Sections 7180 et seq. of the Business and Professions Code.